

HARGROUND™

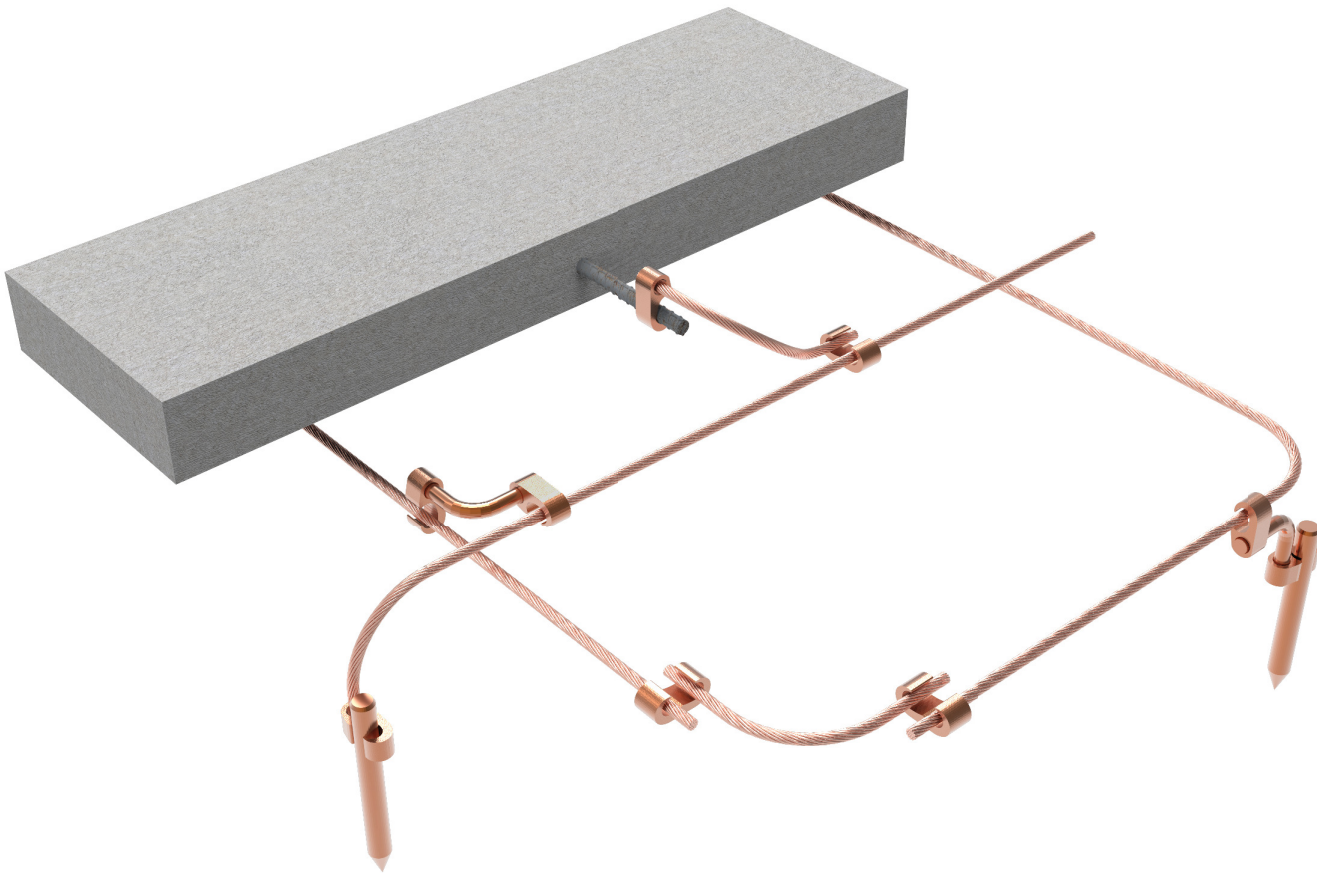
High Compression Grounding

LINE CARD

HARGER®

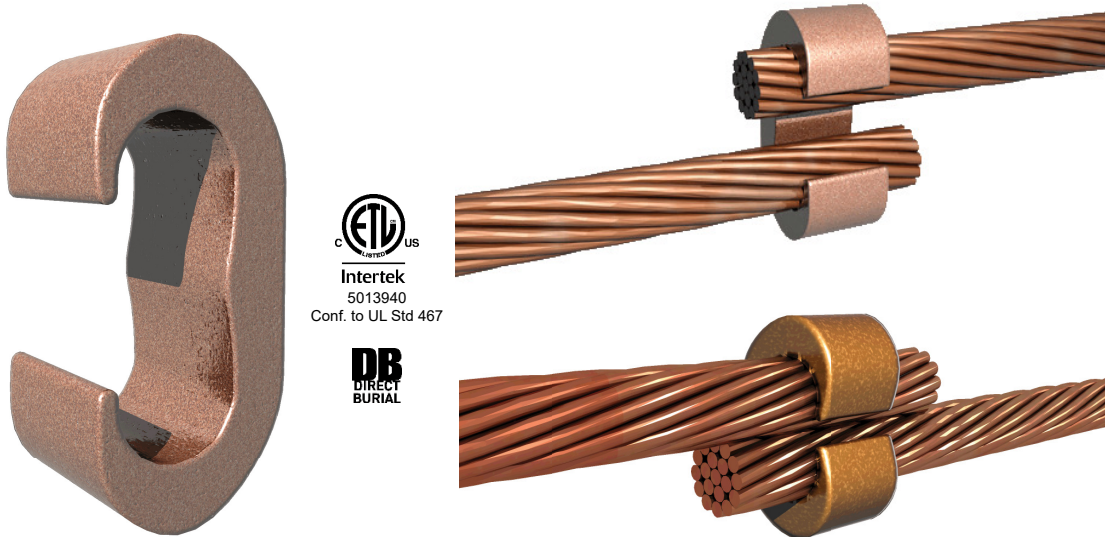
Grounding • Exothermic • Lightning Protection

High Compression Grounding



Manufacturing • Engineering Services • Training

Compression Grounding Series CGET



| Catalog Number | Commerical Copper Range Cable to Cable or Ⓞ Cable to Ground Rod | | Installation Data | |
|-------------------|--|---------------------------------------|-------------------|---------------|
| | Run | Tap | Die Index No. | No. of Crimps |
| CGET26 | #6 Sol. (0.162) - #2 Str. (0.292) 1/4" Rod | #6 Sol. (0.162) - #2 Str. (0.292) | U-C | 1 |
| CGET2/06 | 1 Str. (0.328) - 2/0 Str. (0.419) 3/8" Rod | #6 Sol. (0.162) - #2 Str. (0.292) | U-0 | 1 |
| CGET2/01 | 1 Str. (0.328) - 2/0 Str. (0.419) 3/8" Rod | 1 Str. (0.328) - 2/0 Str. (0.419) | U-0 | 1 |
| CGET2506 | 3/0 Str. (0.470) - 250 kcmil (0.575) 1/2" or 5/8" Rod | 6 Sol. (0.162) - 2/0 Str. (0.419) | U997 | 1 |
| CGET2503/0 | 3/0 Str. (0.470) - 250 kcmil (0.575) 1/2" or 5/8" Rod | 3/0 Str. (0.470) - 250 kcmil (0.575) | U997 | 1 |
| CGET5006 | 300 kcmil (0.630) - 500 kcmil (0.813) 3/4" Rod | 6 Sol. (0.162) - 2/0 Str. (0.419) | U1011 | 2 |
| CGET5003/0 | 300 kcmil (0.630) - 500 kcmil (0.813) | 3/0 Str. (0.470) - 250 kcmil (0.575) | U1011 | 2 |
| CGET500300 | 300 kcmil (0.630) - 500 kcmil (0.813) | 300 kcmil (0.630) - 500 kcmil (0.813) | U1011 | 3 |

Notes:

- ① For ground rod to wire applications, ground rod must be precrimped, see table for appropriate precrimp die.
- Also available with factory applied antioxidant. Add suffix "-A".
- A 12-ton tool is required for these connections.

| Ground Rod Dia. | Pecrimping Dies |
|-----------------|-----------------|
| 1/2" | U2CABT |
| 5/8" | U2CABT |
| 3/4" | U2CABT |

Compression Grounding Series CGCX



| Catalog Number | Cable to Cable | | Cable to Ground Rod | | To Reinforcing Steel | |
|-----------------|---------------------------------------|-------------------------------------|---------------------|-------------------------------------|---|-------------------------------------|
| | Element "A" | Element "B" | Element "A" | Element "B" | Element "A" | Element "B" |
| CGCX2502 | #2 Str. (0.292) - 250 kcmil (0.575) | #2 Str. (0.292) - 250 kcmil (0.575) | 1/2" - 5/8" Rod | #2 Str. (0.292) - 250 kcmil (0.575) | 3/8" - 1/2" #3 - 4 Reinforcing Steel | #2 Str. (0.292) - 250 kcmil (0.575) |
| CGCX2506 | 250 kcmil (0.575) - 500 kcmil (0.813) | #2 Str. (0.292) - 250 kcmil (0.575) | 5/8" - 3/4" Rod | #2 Str. (0.292) - 250 kcmil (0.575) | 5/8" - 3/4" #5 - 6 Reinforcing Steel | #2 Str. (0.292) - 250 kcmil (0.575) |

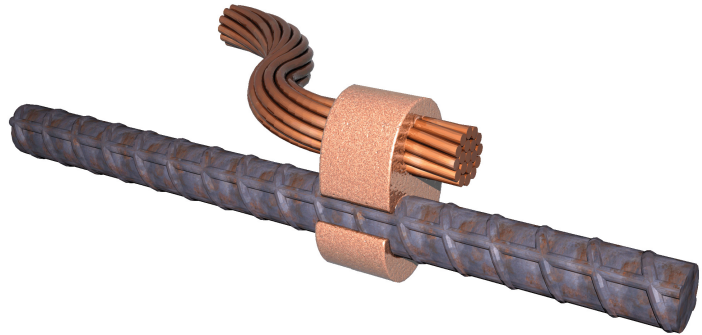
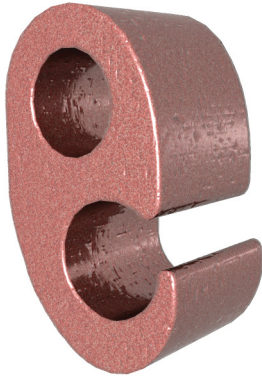
| Catalog Number | Installation Tools, Die Set Catalog Number, Number of Crimps | | | |
|-----------------|--|---------------------------|-------------|---------------------------|
| | Element "A" | Element "A" No. of Crimps | Element "B" | Element "B" No. of Crimps |
| CGCX2502 | U997 | 1 | U997 | 1 |
| CGCX2506 | U998 | 1 | U997 | 1 |

Notes:

- Before crimping, both connector elements can be turned on rod diameter "D" to any desired position.
- Clean rust and/or protective coatings from reinforcing steel prior to installation.
- When attaching connector to ground rod, ground rod must be embossed with appropriate precrimping die.
- Also available with factory applied antioxidant. Add suffix "-A".
- A 12-ton tool is required for these connections.

| Ground Rod Dia. | Pecrimping Dies |
|-----------------|-----------------|
| 1/2" | U2CABT |
| 5/8" | U2CABT |
| 3/4" | U2CABT |

Compression Grounding Series CGCR



| Catalog Number | Accommodates | | ② Cable to Reinforcing Steel | | Installation Data | |
|------------------------|--|--------------------------------------|------------------------------|--------------------------------------|-------------------|---------------|
| | Run | Tap | Run | Tap | Die Index | No. of Crimps |
| CGCR2504 | 1/0 Str. (0.372) through 250 kcmil (0.575) 1/2" - 5/8" Rod | #4 Sol. (0.204) - #2 Str. (0.292) | #3 - #4 Reinforcing Steel | #2 Str. (0.292) | U997 | 1 |
| CGCR2501/0 | | 1/0 Str. (0.372) - 2/0 Str. (0.419) | #3 - #4 Reinforcing Steel | 1/0 Str. (0.372) - 2/0 Str. (0.419) | | 1 |
| CGCR2503/0 ① | | 3/0 Str. (0.470) - 250 kcmil (0.575) | #3 - #4 Reinforcing Steel | 3/0 Str. (0.470) - 250 kcmil (0.575) | | 1 |
| CGCR5004 | 250 kcmil (0.575) through 500 kcmil (0.813) 5/8" - 3/4" Rod | #4 Sol. (0.204) - #2 Str. (0.292) | #5 - #6 Reinforcing Steel | ---- | U998 | 1 |
| CGCR5001/0 | | 1/0 Str. (0.372) - 2/0 Str. (0.419) | #5 - #6 Reinforcing Steel | 1/0 Str. (0.372) - 2/0 Str. (0.419) | | 1 |
| CGCR5003/0 | | 3/0 Str. (0.470) - 250 kcmil (0.575) | #5 - #6 Reinforcing Steel | 3/0 Str. (0.470) - 250 kcmil (0.575) | | 1 |

Notes:

- ① When using 3/0 in tap, minimum run conductor must be 2/0 Str.
- ② Clean rust and protective coatings from reinforcing steel prior to installation to provide proper ground connection. Precrimping is not required.
- When attaching connector to ground rod, ground rod must be embossed with appropriate precrimping die.
- Also available with factory applied antioxidant. Add suffix "-A".
- A 12-ton tool is required for these connections.

| Ground Rod Dia. | Precrimping Dies |
|-----------------|------------------|
| 1/2" | U2CABT |
| 5/8" | U2CABT |
| 3/4" | U2CABT |



Harger Lightning & Grounding

301 Ziegler Drive • Grayslake, IL 60030
Phone: 800-842-7437 • 847-548-8700

Website: www.harger.com • Email: hargersales@harger.com



HCGLC-11.19