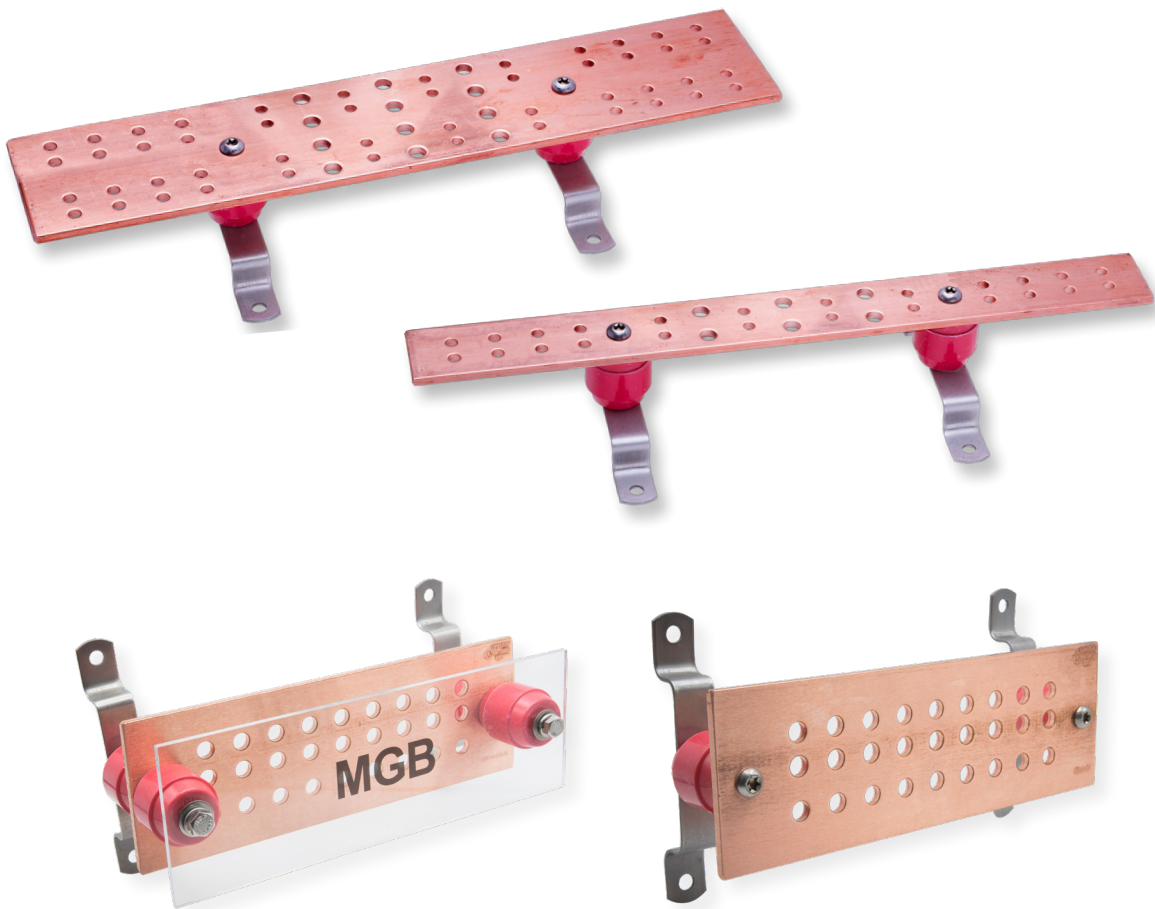
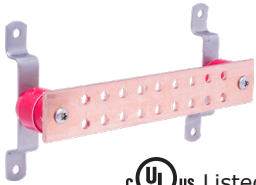


Grounding Busbars

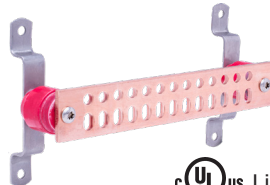


Quality UL Listed grounding busbars for the electrical and telecommunication markets.

2" Grounding Busbars



cUL_{US} Listed 467



cUL_{US} Listed 467

Hole Pattern G

Part No.	Bar Size
GBI14210G	1/4" x 2" x 10"
GBI14212G	1/4" x 2" x 12"
GBI14212GKT*	1/4" x 2" x 12"
GBI14216G	1/4" x 2" x 16"

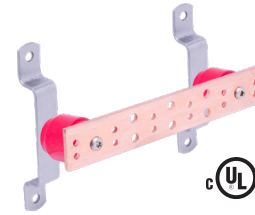
- Accommodates "C" spaced two hole lugs (1" on center).
- 12" bar pictured. Holes are 7/16" diameter.

Hole Pattern P

Part No.	Bar Size
GBI14210P	1/4" x 2" x 10"
GBI14212P	1/4" x 2" x 12"
GBI14212PKT*	1/4" x 2" x 12"
GBI14216P	1/4" x 2" x 16"

- Accommodates "B" and "C" spaced two hole lugs (3/4" and 1" on center).
- 12" bar pictured. Holes are 7/16" diameter and slots are 7/16" x 11/16".

2" TGB Grounding Busbars

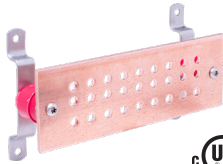


cUL_{US} Listed 467

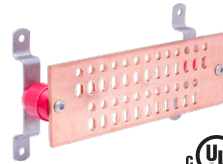
Part No.	Bar Size
GBI14210TGB	1/4" x 2" x 10"
GBI14212TGB	1/4" x 2" x 12"
GBI14212TGBKT*	1/4" x 2" x 12"

- 5/16" hole sets on 5/8" centers. Accommodates "A" spaced two hole compression lugs.
- 7/16" hole sets on 1" centers. Accommodates "C" spaced two hole compression lugs.
- Meets "BICSI" and EIA/TIA 607 standards.
- Also referred to as a Secondary Bonding Busbar (SBB).

4" Grounding Busbars



cUL_{US} Listed 467



cUL_{US} Listed 467

Hole Pattern J

Part No.	Bar Size
GBI14412J	1/4" x 4" x 12"
GBI14416J	1/4" x 4" x 16"
GBI14420J	1/4" x 4" x 20"
GBI14420JKT*	1/4" x 4" x 20"
GBI14424J	1/4" x 4" x 24"

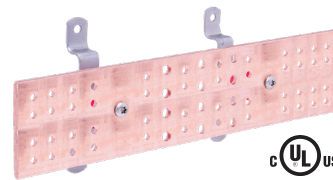
- Accommodates "B" and "C" spaced two hole lugs (3/4" and 1" on center).
- 12" bar pictured. Holes are 7/16" diameter.

Hole Pattern M

Part No.	Bar Size
GBI14412M	1/4" x 4" x 12"
GBI14416M	1/4" x 4" x 16"
GBI14420M	1/4" x 4" x 20"
GBI14420MKT*	1/4" x 4" x 20"
GBI14424M	1/4" x 4" x 24"

- Accommodates "B" and "C" spaced two hole lugs (3/4" and 1" on center).
- 12" bar pictured. Holes are 7/16" diameter and slots are 7/16" x 11/16".

4" TMGB Grounding Busbars



cUL_{US} Listed 467

Part No.	Bar Size
GBI14412TMGB	1/4" x 4" x 12"
GBI14412TMGBKT*	1/4" x 4" x 12"
GBI14420TMGB	1/4" x 4" x 20"
GBI14420TMGBKT*	1/4" x 4" x 20"
GBI14424TMGB	1/4" x 4" x 24"
GBI14424TMGBKT*	1/4" x 4" x 24"

- 5/16" hole sets on 5/8" centers. Accommodates "A" spaced two hole compression lugs.
- 7/16" hole sets on 1" centers. Accommodates "C" spaced two hole compression lugs.
- Meets "BICSI" and EIA/TIA 607 standards.
- 20" bar pictured.
- Also referred to as a Primary Bonding Busbar (PBB).

*Kit Includes an assortment of:



NOTES:

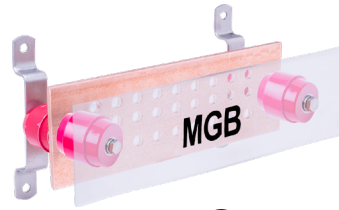
- All bars manufactured from electrolytic tough pitch 110 alloy copper bar.
- Bars available electro-tin plated. When ordering, add prefix "T" to part number.
- Other sizes, patterns, and kits available. Contact the factory for details.

Grounding Busbars with Plexiglass

Hole Pattern J

Part No.	Bar Size
GBIP14412JMGB	1/4" x 4" x 12"
GBIP14416JMGB	1/4" x 4" x 16"
GBIP14420JMGB	1/4" x 4" x 20"

- Accommodates "B" and "C" spaced two hole lugs (3/4" and 1" on center).
- 12" bar pictured. Holes are 7/16" diameter.
- Plexiglass cover with MGB lettering. Other lettering available.



cUL^{us} Listed 467

Equipment Rack Grounding Busbars & Kits

Vertical

Part No.	Bar Size
RGBV145836A	1/4" x 5/8" x 36"
RGBVKIT145836A*	1/4" x 5/8" x 36"
RGBV145872A	1/4" x 5/8" x 72"
RGBVKIT145872A*	1/4" x 5/8" x 72"

- 1/4" electrolytic tough pitch 110 copper alloy bar.
- Accommodates one hole lugs or two hole lugs (5/8" on center).
- Elongated mounting holes.
- 36" bar has 2 PEM studs 1" on center at one end for ground conductor connection.
- 72" bar has 4 PEM studs (two at each end) 1" on center for grounding conductor connections.
- 72" bar pictured.

*Kit Includes:

- (1) Rack grounding busbar
- (8) CS44S: 1/4"-20x1/2" SS hex head cap screw
- (3) 11/16WINS: white delrin insulator
- (3) SMS0126SHWZ: 12-24x5/8" hex washer head screw

cUL^{us} Listed 467



- (4) LW5S: 5-16" SS lock washer
- (8) LW4S: 1/4" SS lock washer
- (4) N518S: 5-16"-18 SS hex nut
- (1) GECLB22C: #2 compression lug

Horizontal

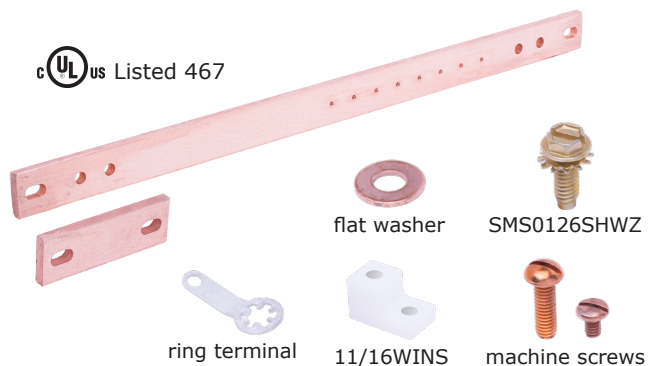
Part No.	Bar Size
RGBH14119.25	1/4" x 1" x 19-1/4"
RGBHKIT14119.25*	1/4" x 1" x 19-1/4"
RGBH14123.25	1/4" x 1" x 23-1/4"
RGBHKIT14123.25*	1/4" x 1" x 23-1/4"
RGBH14135.25	1/4" x 1" x 35-1/4"
RGBHKIT14135.25*	1/4" x 1" x 35-1/4"

- 1/4" electrolytic tough pitch 110 copper alloy bar.
- Bar Only includes 3" bar splice plate.
- Designed to fit 19", 23" and 35" equipment racks.
- 19-1/4" busbar pictured.

*Kit Includes:

- (1) Rack grounding busbar
- (1) 3" bar splice plate with two slotted holes
- (2) 11/16WINS: white delrin insulator
- (2) SMS0126SHWZ: 12-24x5/8" hex washer head screw

cUL^{us} Listed 467



- (2) #12-24x3/4" copper machine screw
- (2) #12 copper flat washer
- (8) #6-32x1/4" copper machine screw
- (8) #6 ring terminal

Compression Lugs



Two Hole Long Barrel Compression Lugs

Part No.	Cable Size (AWG)	OC Dim. B/T Holes	Hole Size	Color Code
GECLB62A	6	.625"	1/4"	Blue
GECLB62C	6	1"	3/8"	Blue
GECLB22C	2	1"	3/8"	Brown
GECLB1/02C	1/0	1"	3/8"	Pink
GECLB2/02C	2/0	1"	3/8"	Black
GECLB3/02C	3/0	1"	3/8"	Orange
GECLB4/02C	4/0	1"	3/8"	Purple

Slotted Long Barrel Compression Lugs

Part No.	Cable Size (AWG)	Hole Spacing Range	Hole Size	Color Code
GECLB62BC	6 Str.	.75" - 1"	3/8"	Blue
GECLB22BC	2 Str.	.75" - 1"	3/8"	Brown
GECLB22BCS	2 Sol.	.75" - 1"	3/8"	White

- Manufactured from electro plated tinned copper.
- For use on copper or tinned copper conductors.
- Lugs have inspection ports.
- Other sizes available. Contact factory.

Antioxidant Joint Compound

Copper

Part No.	Size
HCAJC1/2	1/2 oz.
HCAJC8	8 oz.



- Oxide inhibiting joint compound used to improve electrical conductivity and enhance the integrity of the connection.
- Synthetic base with suspended copper particles.
- Material is copper in color.
- Recommended for copper to copper connections, copper threads and all grounding applications.

Aluminum

Part No.	Size
HAAJC1/2	1/2 oz.
HAAJC8	8 oz.



- Oxide inhibiting joint compound used to improve electrical conductivity and enhance the integrity of the connection.
- Synthetic base with suspended zinc particles.
- Material is gray in color.
- Recommended for aluminum to aluminum connections, aluminum to copper connections and aluminum conduit threads.

Stainless Steel Hardware



Hex Head Cap Screws

Part No.	Thread Size	Length
CS48S-100	1/4-20	1"
CS68S-100	3/8-16	1"

Pat. # US 9,702,395



Bonding Lug Washers

Part No.	Size
BLW4S-250	1/4" x 5/8"
BLW6S-250	3/8" x 1"



Nuts

Part No.	Thread Size
N420S-100	1/4-20
N616S-100	3/8-16



grounding | exothermic | lightning protection

301 Ziegler Dr • Grayslake, IL 60030

800.842.7437 • www.harger.com • sales@harger.com



GBLC-3.2024