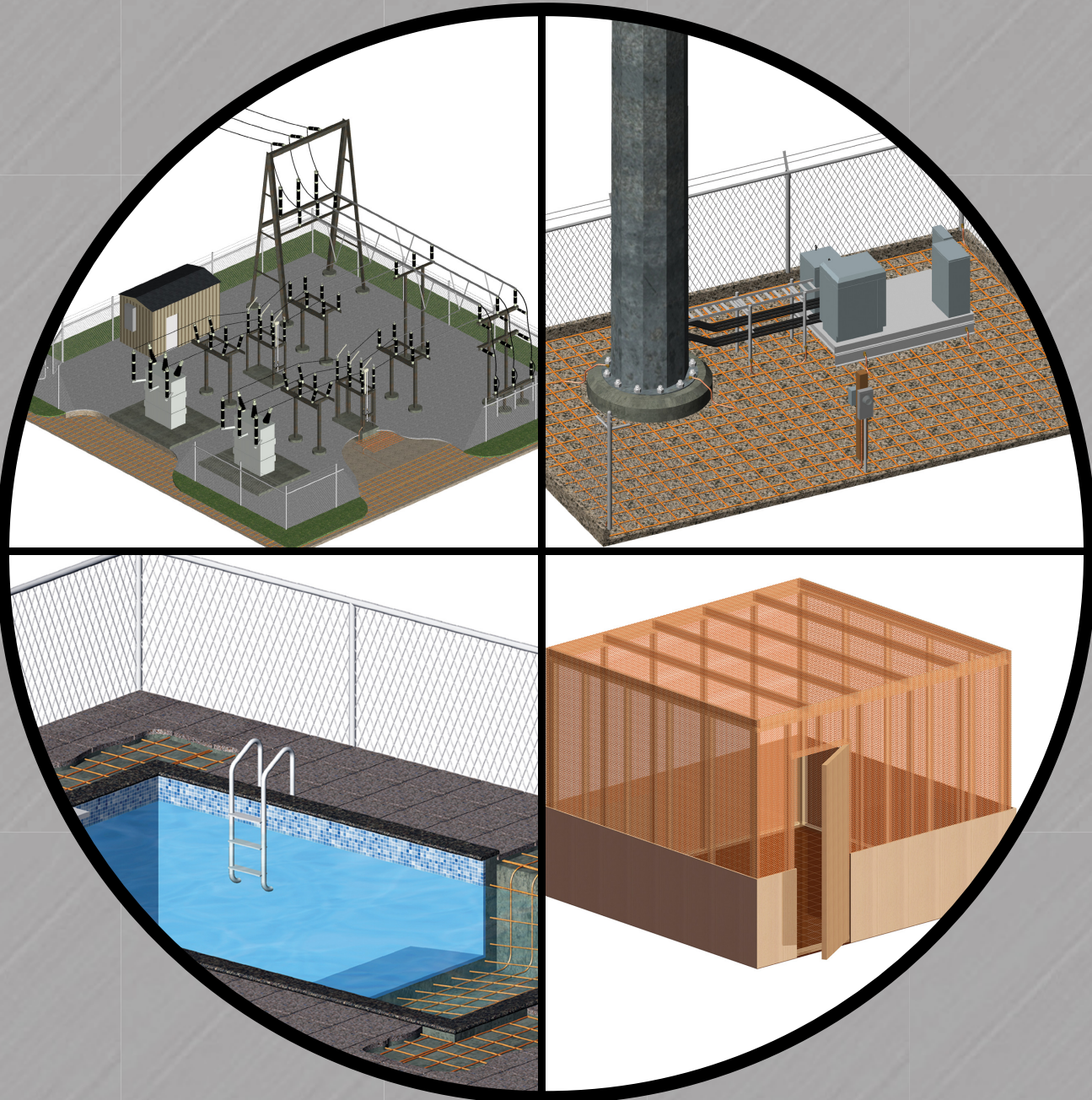


# HARGER®

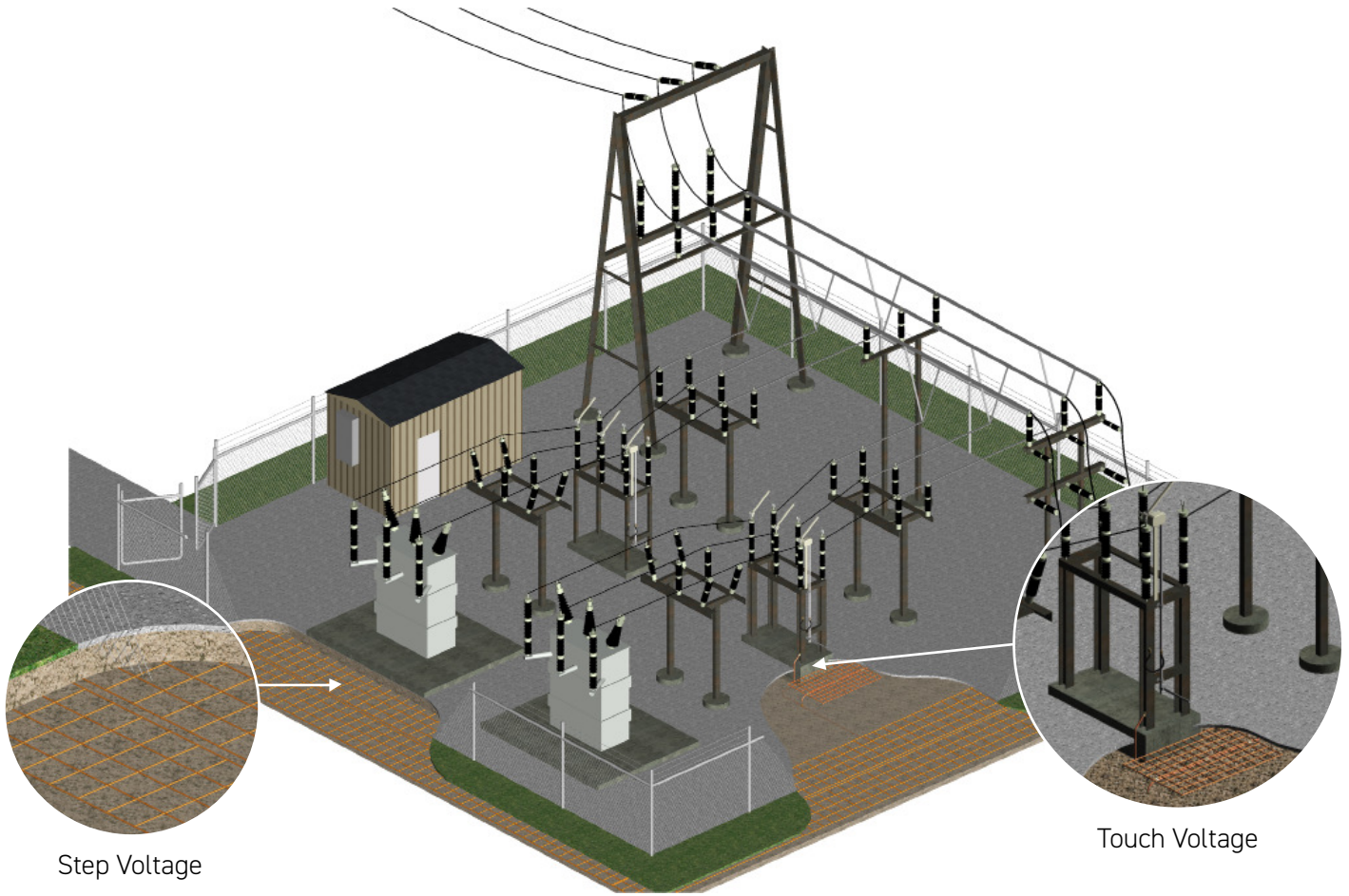


## Copper Wire Mesh



Improving Ground Planes, Reducing Step & Touch Voltages and RF Shielding

# Utility Application

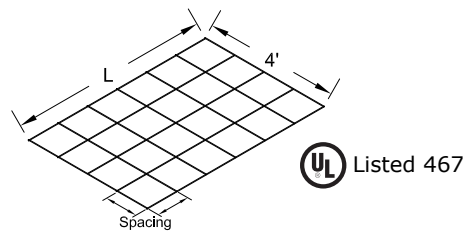


## Step Voltage

Perimeter Ground Mesh provides against dangerous Step Voltages.

### Standard Ground Mesh Sizes

Part No.	Width (ft.)	Length (ft.)	Conductor Size (AWG)	Conductor Spacing (in.)
GM450612	4	50	6	12
GM4100612	4	100	6	12
GM4150612	4	150	6	12



• Other mesh sizes and wire gauges available.

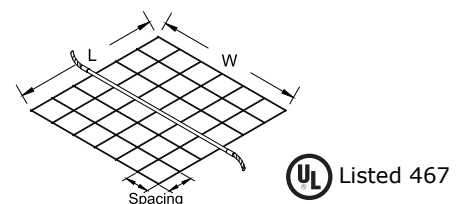
## Touch Voltage

Larger personnel safety mats are designed to protect against Touch Voltages under fault conditions.

### Standard Mat Sizes

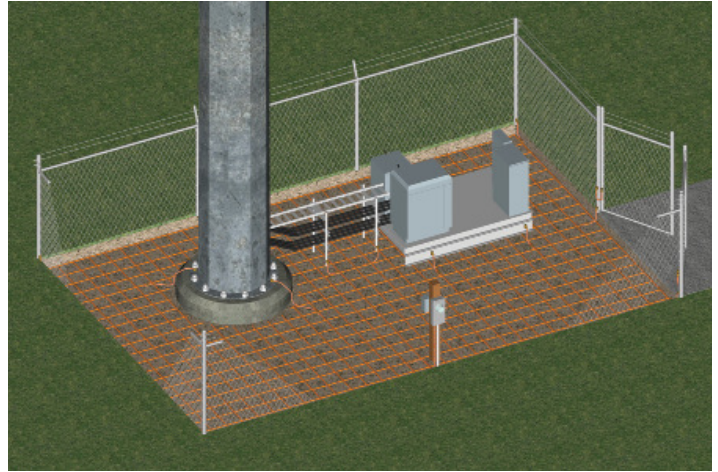
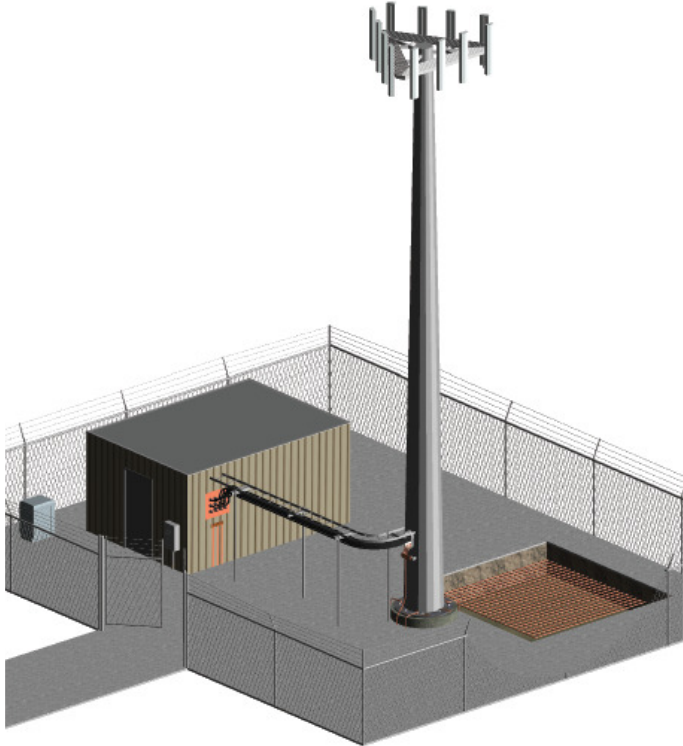
Part No.	Width (ft.)	Length (ft.)	Conductor Size (AWG)	Conductor Spacing (in.)	Optional Center Wire
PSM4666C1/0S	4	6	6	6	1/0 Sol
PSM4644C2/0	4	6	4	4	2/0
PSM61066C4/0S	6	10	6	6	4/0 Sol

### Personnel Safety Mats



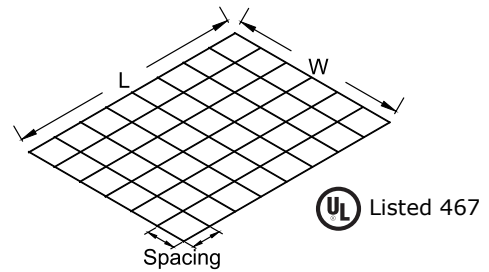
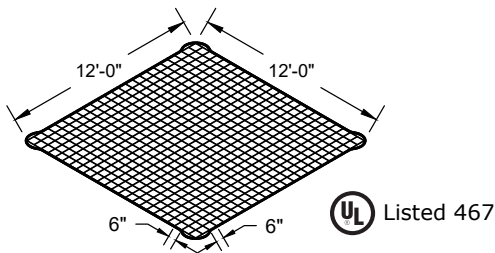
• Other mat sizes and wire gauges available.

# Communication Site Application



## Ground Enhancement

Prefabricated ground mats can be used in conjunction with traditional grounding system designs.



## Equipotential Plane

Provides equipotential ground plane in environments with little top soil where standard ground systems are not feasible.

Part No.	Loop Conductor
GM121266	None
GM121266P2T	2T
GM121266SPR12	4/0-19T

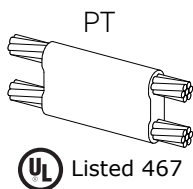
- 12' x 12' prefabricated wire grounding mat with 6" squares made from #6 AWG solid copper.
- Perimeter conductor makes for easy attachment to ground conductors.
- Other mat sizes and wire gauges available.

## Standard Mesh Sizes

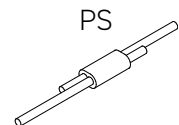
Part No.	Width (ft.)	Length (ft.)	Conductor Size (AWG)	Conductor Spacing (in.)
GM125066	12	50	6	6
GM1250612	12	50	6	12
GM1250624	12	50	6	24

- For enhancing external grounding systems at radio, paging, cellular, etc. transmitting/receiving facilities.
- Mesh is silver brazed at all crossovers using a 15% or 35% silver brazing alloy and a non-corrosive flux.
- Other mesh sizes and wire gauges available.

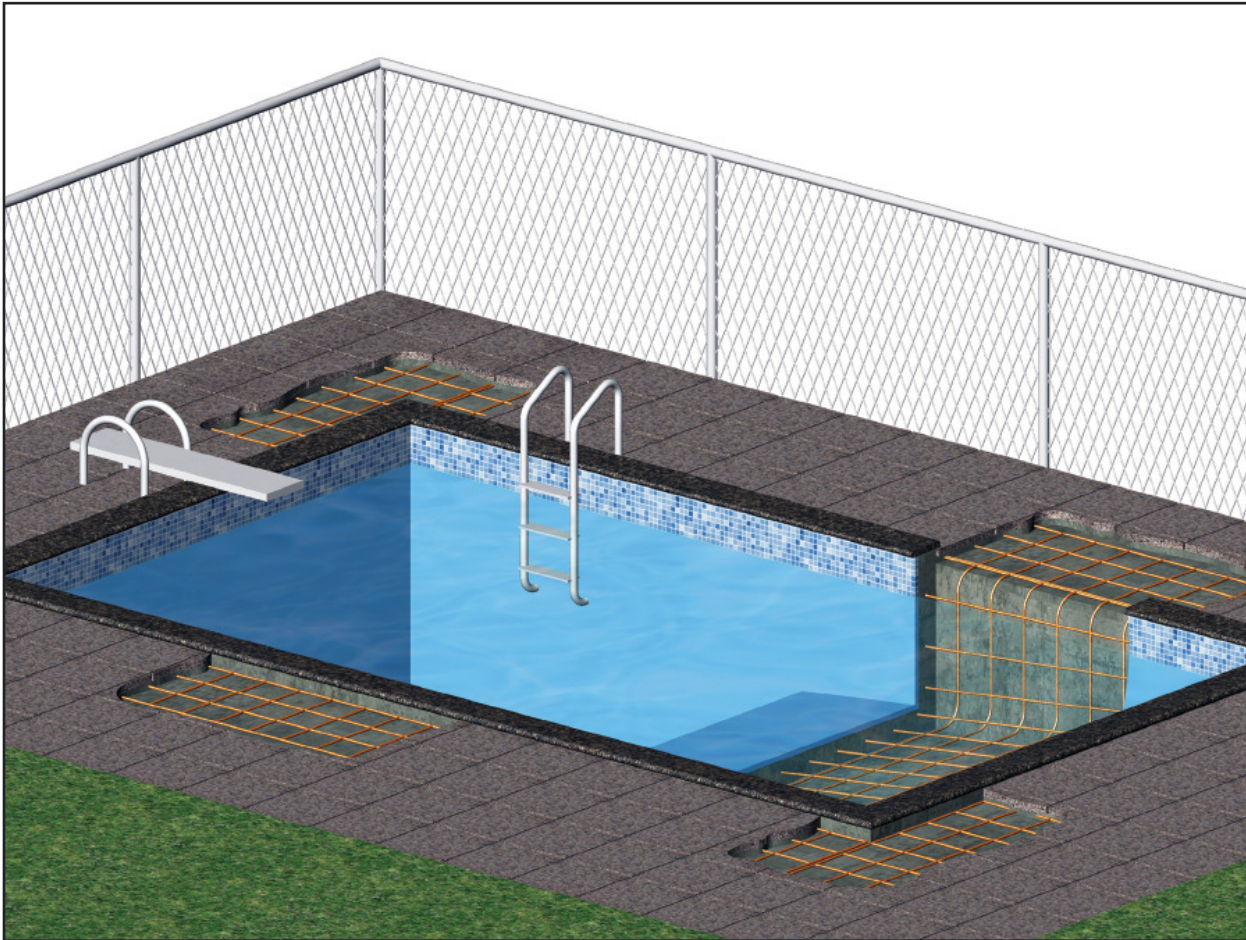
## Ultraweld Exothermic Molds



Part No.	Run	Tap	Weld Metal		Required Handle
			UltraShot	NUWTube	
PS6S6SL	#6 Sol	#6 Sol	US25	NUWTUBE25	MH3
PT2S6SB	#2 Sol	#6 Sol	US45	NUWTUBE45	MH1
PT4/06SB	4/0	#6 Sol	US90	NUWTUBE90	MH1
PT4/04/0B	4/0	4/0	US200	NUWTUBE200	MH1

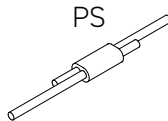
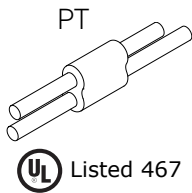


# Pool Grounding



## Voltage Gradient Control

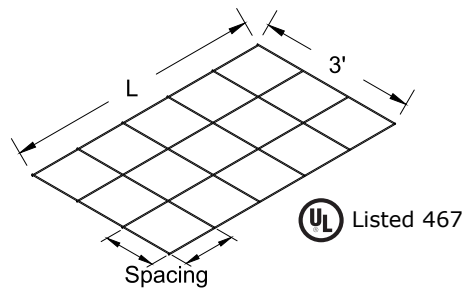
Ground Mesh is used to reduce Voltage Gradients in the pool area.



### Cable to Cable Ultraweld Exothermic Connection Molds

Part No.	Run	Tap	Weld Metal	
			UltraShot	NUWTube
PT8S8SB	#8 Sol	#8 Sol	US45	NUWTUBE45
PS8S8SL	#8 Sol	#8 Sol	US25	NUWTUBE25
PS8S6SL	#8 Sol	#6 Sol	US25	NUWTUBE25

- B mold requires MH1 handle.
- L mold requires MH3 handle (included).



### UL Listed Prefabricated #8 Solid Copper Ground Mesh

Part No.	Width (ft.)	Length (ft.)	Conductor Spacing (in.)
GM350812	3	50	12
GM375812	3	75	12
GM3100812	3	100	12

- Other mesh sizes and wire gauges available.



# Your Ultimate Source for Engineered Solutions



Approximately 50 miles from Chicago, the corporate office and 65,000 square foot facility is located in Grayslake, Illinois.



Another 75,000 square foot manufacturing plant, approximately 110 miles south of Raleigh, is located in Fairmont, North Carolina.

Established in 1960, Harger manufactures high quality products and combines them with exceptional customer service and technical expertise. Harger has the resources and partnerships to support your needs from planning stages to project completion.



**Harger Lightning & Grounding**  
301 Ziegler Drive, Grayslake, IL 60030  
800.842.7437 • [www.harger.com](http://www.harger.com) • [hargersales@harger.com](mailto:hargersales@harger.com)