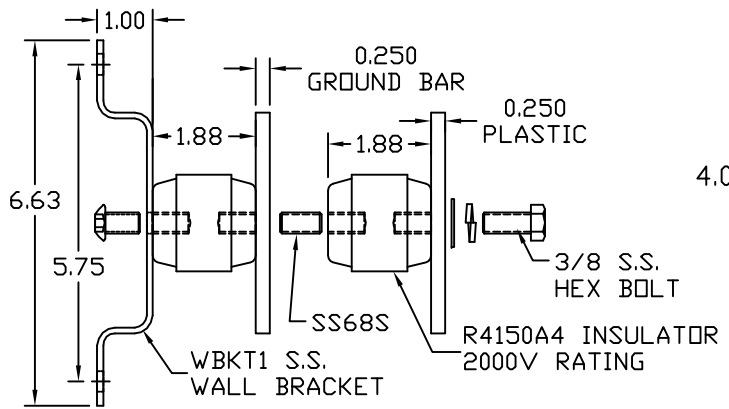
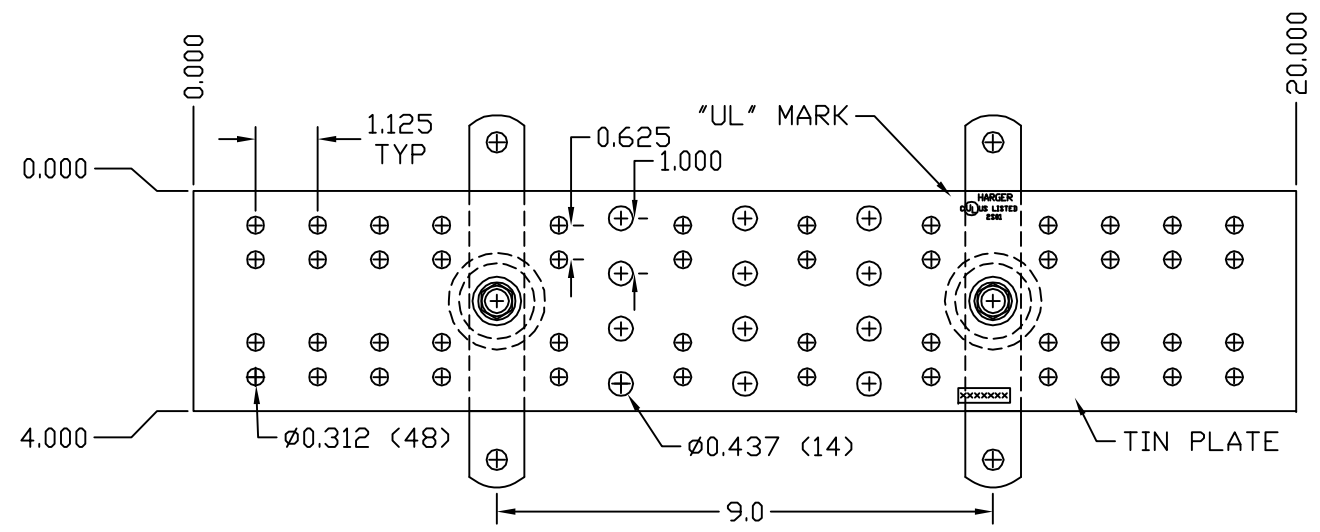


HCAJ1/2



TINNED COPPER GROUND BAR ASSEMBLY

EST WT 8.6#

APPROVED

AS DRAWN: _____
 AS NOTED: _____
 DATE: _____

THIS DOCUMENT AND THE CONTENTS THEREOF IS THE PROPERTY OF HARGER INC., AND IS FURNISHED TO YOU FOR INFORMATION ONLY. THE INFORMATION CONTAINED HEREIN IS CONFIDENTIAL AND OF A PROPRIETARY NATURE AND MUST NOT BE DISCLOSED TO THIRD PARTIES WITHOUT THE EXPRESS WRITTEN APPROVAL OF HARGER INC.

LET	REVISION	DATE	BY

TOLERANCES UNLESS NOTED:
 FRACTIONAL +/- 1/16
 DECIMAL +/- .030
 BREAK SHARP EDGES

3RD ANGLE PROJECTION

PART NO. TGBIP14420TMGB
 BICSI GROUND BAR ASSEMBLY W/COVER

DRAWN BY:
DVBV
 CHECKED BY:
 DATE:
 110608



REVISION:
 -
 SCALE:
 9/32
 SHEET:
 1 OF 1