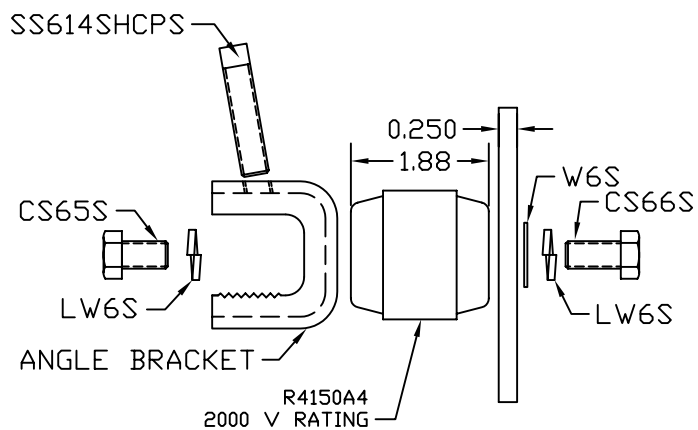


TINNED GROUND BAR ASSEMBLY



HARDWARE DETAIL

EST. WEIGHT 7.48 LBS

APPROVED

AS DRAWN: _____
 AS NOTED: _____
 DATE: _____

THIS DOCUMENT AND THE CONTENTS THEREOF IS THE PROPERTY OF HARGER INC., AND IS FURNISHED TO YOU FOR INFORMATION ONLY. THE INFORMATION CONTAINED HEREIN IS CONFIDENTIAL AND OF A PROPRIETARY NATURE AND MUST NOT BE DISCLOSED TO THIRD PARTIES WITHOUT THE EXPRESS WRITTEN APPROVAL OF HARGER INC.

A	WERE $\phi 3/8$ X 5/8 SLOTS & $\phi 3/8$ HOLES	021604	WSM
LET	REVISION	DATE	BY
TOLERANCES UNLESS NOTED:		3RD ANGLE PROJECTION	
FRACTIONAL	+/- 1/16		
.00	+/- .030		
.000	+/- .010		

PART NO. TGBIA14424M
 TINNED CU GROUND BAR ASSEMBLY

DRAWN BY: EHS
 CHECKED BY: -
 DATE: 091202



301 ZIEGLER DRIVE
 GRAYSLAKE, IL 60030
 (847) 548-8700

REVISION: A
 SCALE: 3/8
 SHEET: 1 OF 1