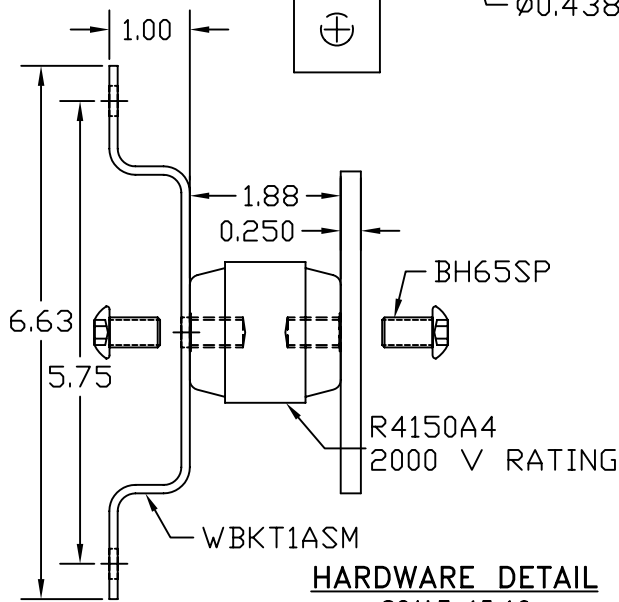


TINNED GROUND BAR ASSEMBLY



HARDWARE DETAIL
SCALE 15:16

EST. WEIGHT 7.21 LBS

APPROVED

AS DRAWN: _____
 AS NOTED: _____
 DATE: _____

THIS DOCUMENT AND THE CONTENTS THEREOF IS THE PROPERTY OF HARGER INC., AND IS FURNISHED TO YOU FOR INFORMATION ONLY. THE INFORMATION CONTAINED HEREIN IS CONFIDENTIAL AND OF A PROPRIETARY NATURE AND MUST NOT BE DISCLOSED TO THIRD PARTIES WITHOUT THE EXPRESS WRITTEN APPROVAL OF HARGER INC.

A	BH65SP WAS CS66S, LW6S, W6S	071008	DVB
LET	REVISION	DATE	BY
TOLERANCES UNLESS NOTED:		3RD ANGLE PROJECTION	
FRACTIONAL	+/- 1/16		
.00	+/- .030		
.000	+/- .010		

PART NO. TGBI14420C
 TINNED CU GROUND BAR ASSEMBLY

DRAWN BY:
LAL
 CHECKED BY:
-
 DATE:
071497



301 ZIEGLER DRIVE
 GRAYSLAKE, IL 60030
 (847) 548-8700

REVISION:
A
 SCALE:
7/16
 SHEET:
1 OF 1