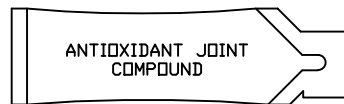
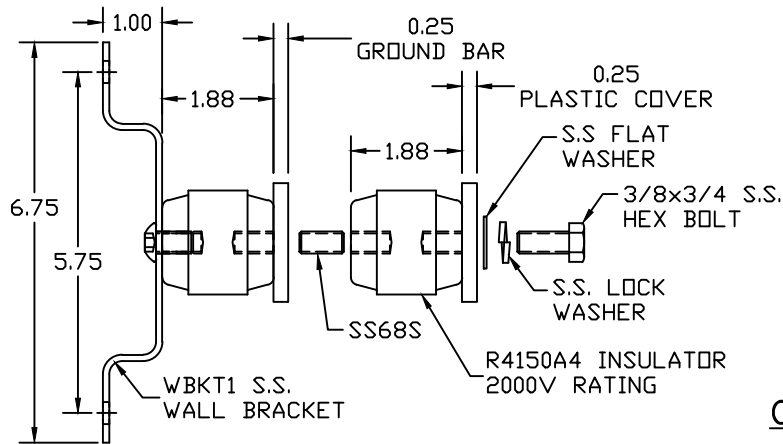


CLEAR PLASTIC COVER

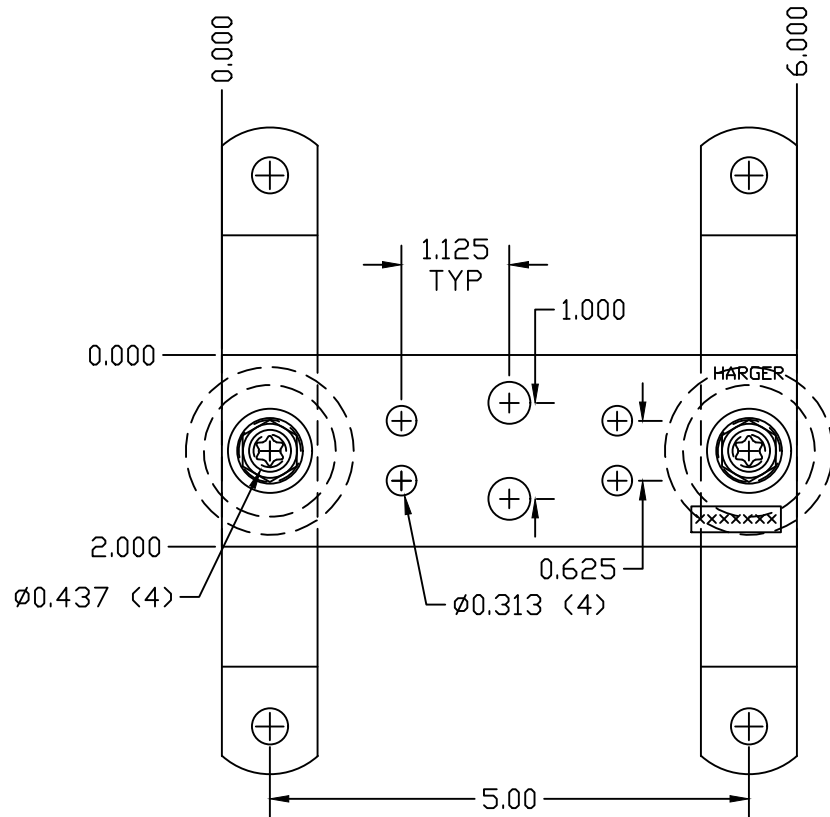


HCAJ1/2



COPPER GROUND BAR ASSEMBLY

EST WT 2.73#



APPROVED

AS DRAWN: _____
 AS NOTED: _____
DATE: _____

THIS DOCUMENT AND THE CONTENTS THEREOF IS THE PROPERTY OF HARGER INC., AND IS FURNISHED TO YOU FOR INFORMATION ONLY. THE INFORMATION CONTAINED HEREIN IS CONFIDENTIAL AND OF A PROPRIETARY NATURE AND MUST NOT BE DISCLOSED TO THIRD PARTIES WITHOUT THE EXPRESS WRITTEN APPROVAL OF HARGER INC.

LET	REVISION	DATE	BY
TOLERANCES UNLESS NOTED: FRACTIONAL +/- 1/16 DECIMAL +/- .030 BREAK SHARP EDGES			
3RD ANGLE PROJECTION			

PART NO. GBIP1426TGB
BICSI CU GROUND BAR ASSEMBLY W/COVER

DRAWN BY:
BK
CHECKED BY:
DATE:
032106



301 ZIEGLER DRIVE
GRAYSLAKE, IL 60030
(847) 548-8700

REVISION:
A
SCALE:
1/2
SHEET:
1 OF 1