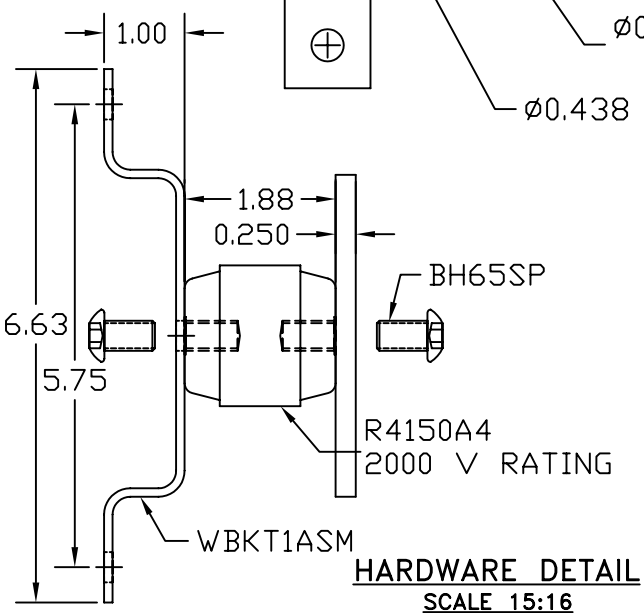


GROUND BAR ASSEMBLY



EST. WEIGHT 6.06 LBS

APPROVED

AS DRAWN: _____
 AS NOTED: _____
 DATE: _____

THIS DOCUMENT AND THE CONTENTS THEREOF IS THE PROPERTY OF HARGER INC., AND IS FURNISHED TO YOU FOR INFORMATION ONLY. THE INFORMATION CONTAINED HEREIN IS CONFIDENTIAL AND OF A PROPRIETARY NATURE AND MUST NOT BE DISCLOSED TO THIRD PARTIES WITHOUT THE EXPRESS WRITTEN APPROVAL OF HARGER INC.

LET	REVISION	DATE	BY
B	BH65SP WAS CS66S, LW6S, W6S	031108	DVB
A	WERE #0.375 HOLES & #0.375X0.687 SLOTS	091703	EHS
TOLERANCES UNLESS NOTED:		3RD ANGLE PROJECTION	
FRACTIONAL +/- 1/16			
.00 +/- .030			
.000 +/- .010			

PART NO. GBI14420M
 CU GROUND BAR ASSEMBLY

DRAWN BY: LAL
 CHECKED BY: _____
 DATE: 031201



301 ZIEGLER DRIVE
 GRAYSLAKE, IL 60030
 (847) 548-8700

REVISION: B
 SCALE: 7/16
 SHEET: 1 OF 1