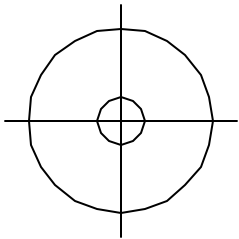
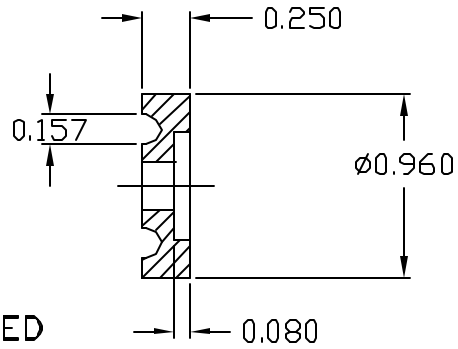
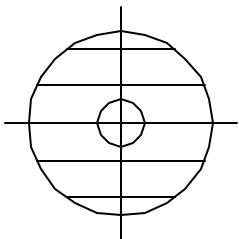
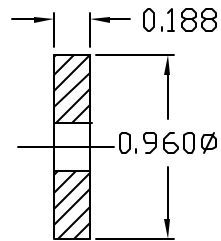


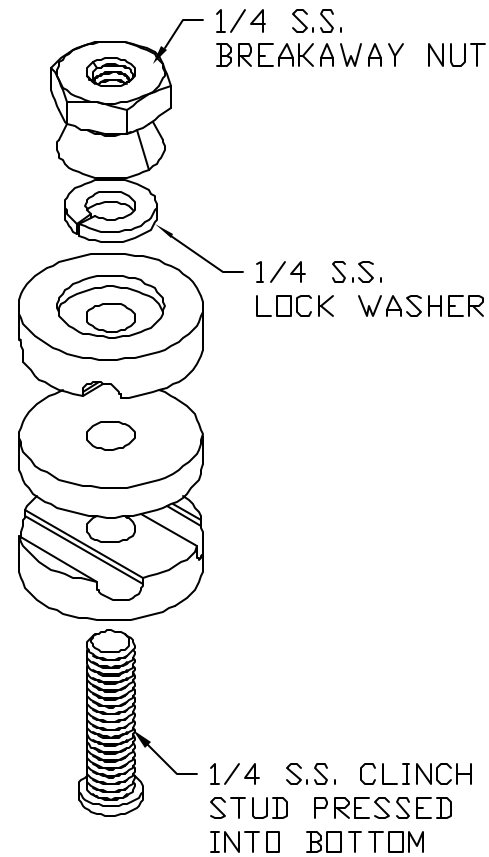
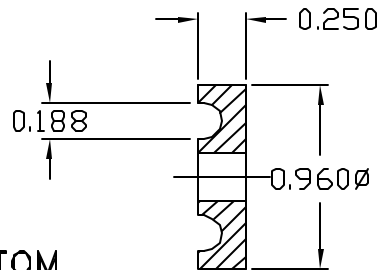
**TOP
TIN PLATED
BRASS**



**MIDDLE
TIN PLATED
BRASS**



**BOTTOM
TIN PLATED
BRASS**



ASSEMBLY

EST. WT .5 LBS

APPROVED

THIS DOCUMENT AND THE CONTENTS THEREOF IS THE PROPERTY OF HARGER INC., AND IS FURNISHED TO YOU FOR INFORMATION ONLY. THE INFORMATION CONTAINED HEREIN IS CONFIDENTIAL AND OF A PROPRIETARY NATURE AND MUST NOT BE DISCLOSED TO THIRD PARTIES WITHOUT THE EXPRESS WRITTEN APPROVAL OF HARGER INC.

AS DRAWN: _____
 AS NOTED: _____
 DATE: _____

LET	REVISION	DATE	BY
TOLERANCES UNLESS NOTED:			
FRACTIONAL	+/- 1/64		
.00	+/- .010		
.000	+/- .005		

PART NO. FGC8TP
 FENCE GROUND CLAMP

#8 WIRE

DRAWN BY:

BK

CHECKED BY:

DATE:

040111



301 ZIEGLER DRIVE
 GRAYSLAKE, IL 60030
 (847) 548-8700

REVISION:

-

SCALE:

FULL

SHEET:

1 OF 1