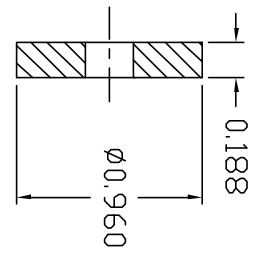
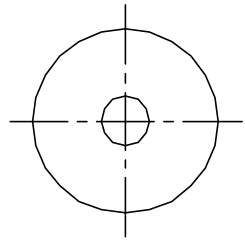
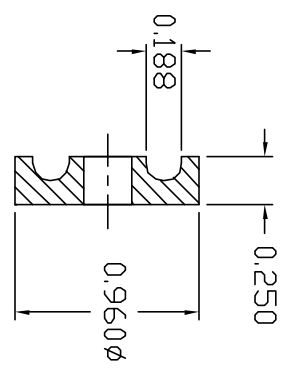
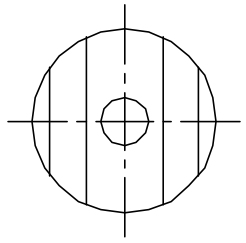


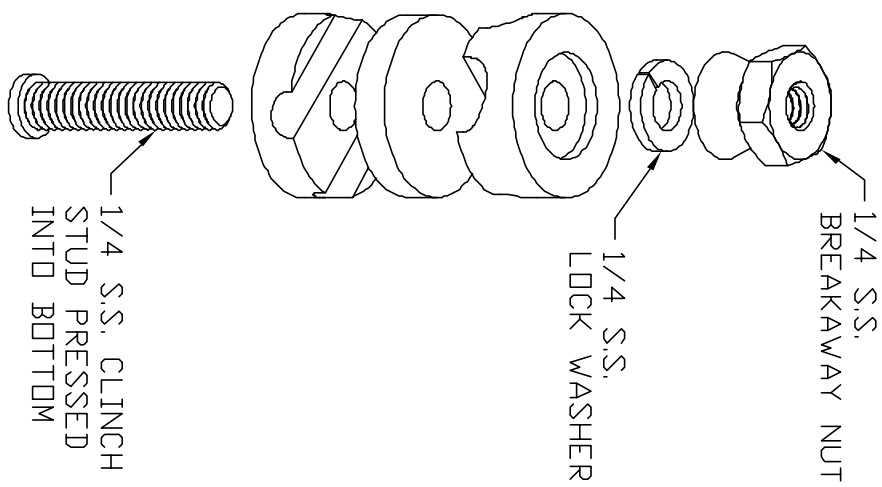
**TOP**



**MIDDLE**



**BOTTOM**



**ASSEMBLY**

**APPROVED**

AS DRAWN: \_\_\_\_\_  
 AS NOTED: \_\_\_\_\_  
 DATE: \_\_\_\_\_

THIS DOCUMENT AND THE CONTENTS THEREOF IS THE PROPERTY OF HARGER INC., AND IS FURNISHED TO YOU FOR INFORMATION ONLY. THE INFORMATION CONTAINED HEREIN IS CONFIDENTIAL AND OF A PROPRIETARY NATURE AND MUST NOT BE DISCLOSED TO THIRD PARTIES WITHOUT THE EXPRESS WRITTEN APPROVAL OF HARGER INC.

| LET | REVISION | DATE | BY |
|-----|----------|------|----|
|     |          |      |    |
|     |          |      |    |

TOLERANCES UNLESS NOTED:  
 FRACTIONAL +/- 1/64  
 .00 +/- .010  
 .000 +/- .005

**PART NO. FG226TP**  
 FENCE GROUND CLAMP

#2-#6 WIRE

DRAWN BY: BK  
 CHECKED BY: \_\_\_\_\_  
 DATE: 052511

**HARGER**  
 301 ZIEGLER DRIVE  
 GRAYS LAKE, IL 60030  
 (847) 548-8700

EST WT 0.2#

REVISION: -  
 SCALE: FULL  
 SHEET: 1 OF 1