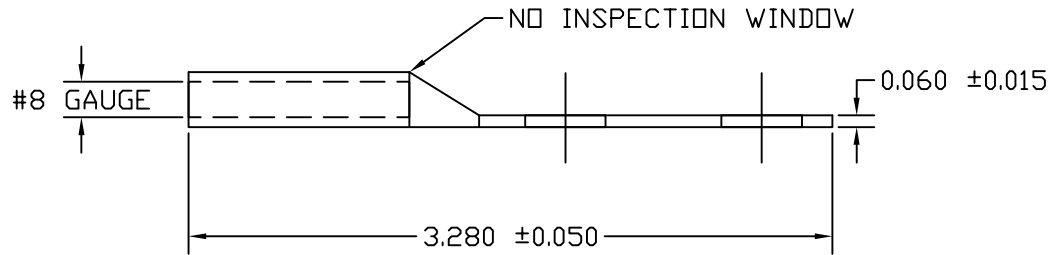
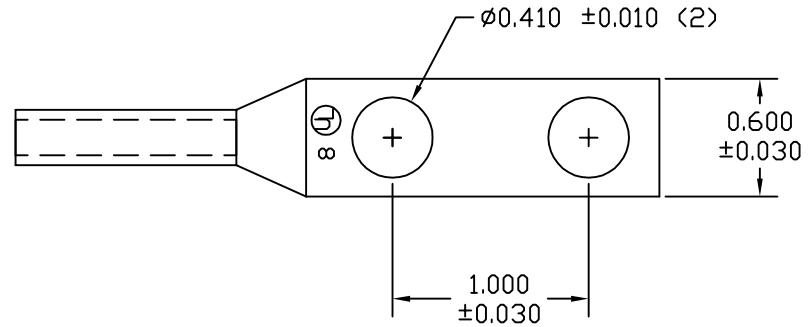


BARREL LABEL
2xSCALE

RED LETTERS ON CLEAR BACKGROUND
RED STRIPES



APPROVED

AS DRAWN: _____
 AS NOTED: _____
 DATE: _____

THIS DOCUMENT AND THE CONTENTS THEREOF IS THE PROPERTY OF HARGER INC., AND IS FURNISHED TO YOU FOR INFORMATION ONLY. THE INFORMATION CONTAINED HEREIN IS CONFIDENTIAL AND OF A PROPRIETARY NATURE AND MUST NOT BE DISCLOSED TO THIRD PARTIES WITHOUT THE EXPRESS WRITTEN APPROVAL OF HARGER INC.

LET	REVISION	DATE	BY

TOLERANCES UNLESS NOTED:
 FRACTIONAL +/- 1/16
 DECIMAL +/- .010
 BREAK SHARP EDGES

PART NO. GECLB82CNP
 COMPRESSION LUG

DRAWN BY:
LAL
 CHECKED BY:
 DATE:
100714



301 ZIEGLER DRIVE
 GRAYSLAKE, IL 60030
 (847) 548-8700

REVISION:
-
 SCALE:
FULL
 SHEET:
1 OF 1