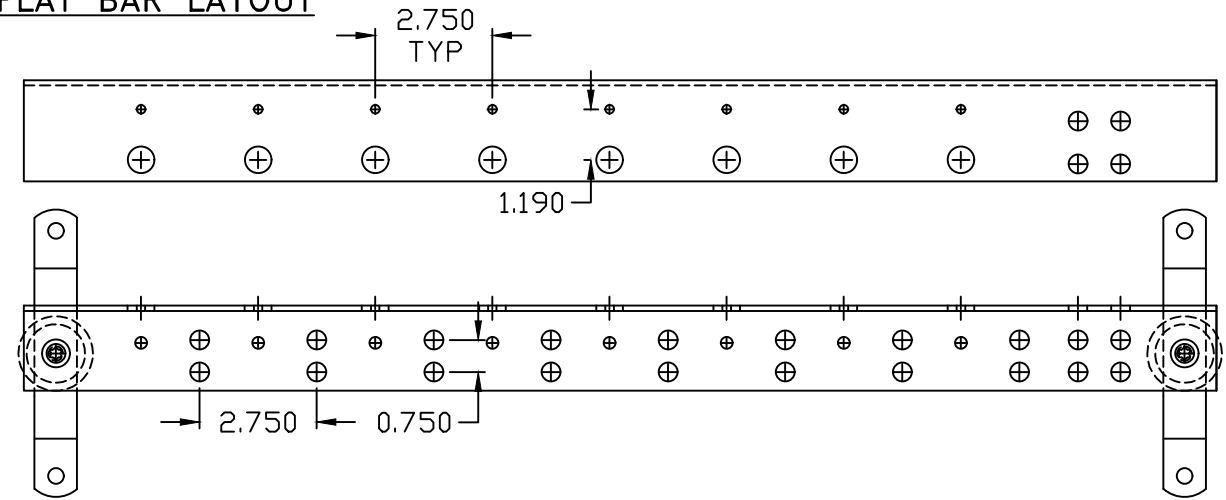
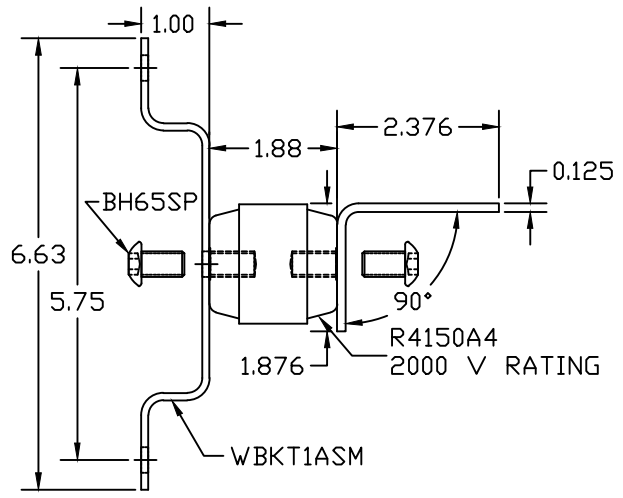


**FLAT BAR LAYOUT**



**BENT GROUND BAR ASSEMBLY**



SIMILAR TO BGBI14428TEL  
EST. WEIGHT 5.37 LBS

**APPROVED**

THIS DOCUMENT AND THE CONTENTS THEREOF IS THE PROPERTY OF HARGER INC., AND IS FURNISHED TO YOU FOR INFORMATION ONLY. THE INFORMATION CONTAINED HEREIN IS CONFIDENTIAL AND OF A PROPRIETARY NATURE AND MUST NOT BE DISCLOSED TO THIRD PARTIES WITHOUT THE EXPRESS WRITTEN APPROVAL OF HARGER INC.

AS DRAWN: \_\_\_\_\_  
 AS NOTED: \_\_\_\_\_  
 DATE: \_\_\_\_\_

A	ADDED 4 HOLES	092199	KAB
LET	REVISION	DATE	BY
TOLERANCES UNLESS NOTED:		3RD ANGLE PROJECTION	
FRACTIONAL	+/- 1/16		
DECIMAL	+/- .030		
BREAK SHARP EDGES			

**PART NO. BGBI18428TEL**  
 CU BENT GROUND BAR ASSEMBLY  
 TELIGENT

DRAWN BY:  
**KAB**  
 CHECKED BY:  
 -  
 DATE:  
 060799



301 ZIEGLER DRIVE  
 GRAYSLAKE, IL 60030  
 (847) 548-8700

REVISION:  
 A  
 SCALE:  
 7/32  
 SHEET:  
 1 OF 1