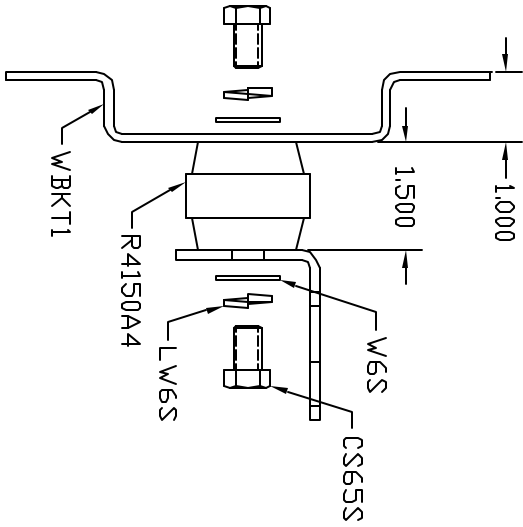


GROUND BAR ASSEMBLY



EST WT 4#

THIS DOCUMENT AND THE CONTENTS
HEREOF IS THE PROPERTY OF
HARGER INC., AND IS FURNISHED TO
YOU FOR INFORMATION ONLY. THE
INFORMATION CONTAINED HEREIN IS
CONFIDENTIAL AND OF A PROPRIETARY
NATURE AND MUST NOT BE DISCLOSED
TO THIRD PARTIES WITHOUT THE
EXPRESS WRITTEN APPROVAL OF
HARGER INC.

PART NO. BCB118417.75STEL		DRAWN BY: LAL		CHECKED BY: 091103		DATE: 091103	
6 UNIT		REVISION: -		SCALE: 3/8		SHEET: 1 OF 1	
301 ZIEGLER DRIVE GRAYSLAKE, IL 60030 (847) 548-8700		TOLERANCES UNLESS NOTED: FRACTIONAL +/- .1/64 DECIMAL +/- .010 HOLE +/- .005		DATE: 1/64		BY:	