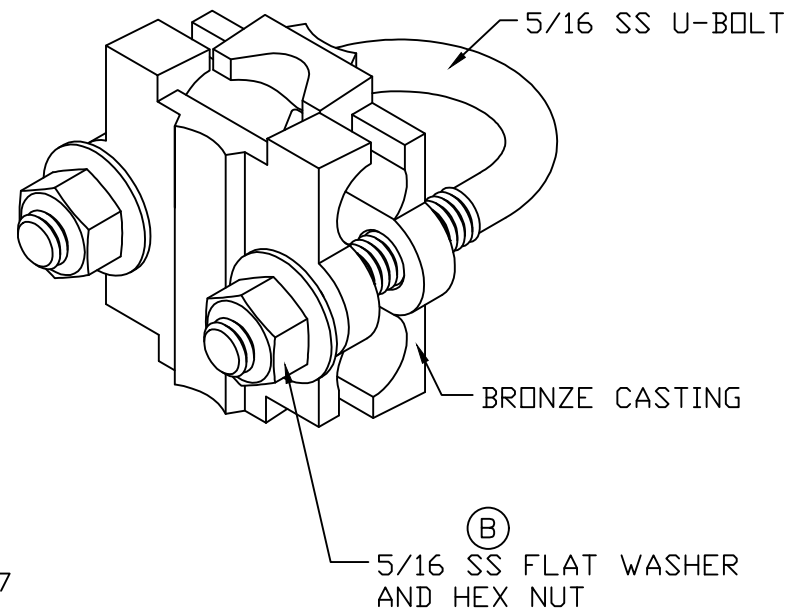


Ⓛ LISTED 96

Ⓛ LISTED 467



FOR GROUND RODS 1/2 TO 1 IN. DIA.  
CONDUCTOR SIZES 6AWG TO 250MCM

FOR NOMINAL PIPE 1/2 TO 3/4 IN.  
CONDUCTOR SIZES 6AWG STR. TO 250MCM

FOR FLOOR PEDESTALS 1/2 TO 1 IN. DIA.\*  
CONDUCTOR SIZES 6AWG STR. TO 250MCM  
\*INCLUDING 7/8 IN. SQUARE PEDESTAL

NSN #5340-01-497-5603

# COPPER GROUND ROD/PEDESTAL CLAMP

EST WT 0.4#


## APPROVED

☐ AS DRAWN: \_\_\_\_\_

☐ AS NOTED: \_\_\_\_\_

DATE: \_\_\_\_\_

THIS DOCUMENT AND THE CONTENTS THEREOF IS THE PROPERTY OF HARGER INC., AND IS FURNISHED TO YOU FOR INFORMATION ONLY. THE INFORMATION CONTAINED HEREIN IS CONFIDENTIAL AND OF A PROPRIETARY NATURE AND MUST NOT BE DISCLOSED TO THIRD PARTIES WITHOUT THE EXPRESS WRITTEN APPROVAL OF HARGER INC.

C	ADDED NSN NUMBER	091306	DV
B	CORRECTED ERROR	032502	LA
A	ADDED PACKAGING	120500	LA
LET	REVISION	DATE	BY
TOLERANCES UNLESS NOTED:		3RD ANGLE	
FRACTIONAL +/- 1/16		PROJECTION	
DECIMAL +/- .030			
BREAK SHARP EDGES			

**PART NO. 305**  
GROUND CLAMP

DRAWN BY:  
LAL

CHECKED BY:

DATE:  
062601

**HARGER™**

301 ZIEGLER DRIVE  
GRAYSLAKE, IL 60030  
(847) 548-8700

REVISION:  
C

SCALE:  
FULL

SHEET:  
1 OF 1