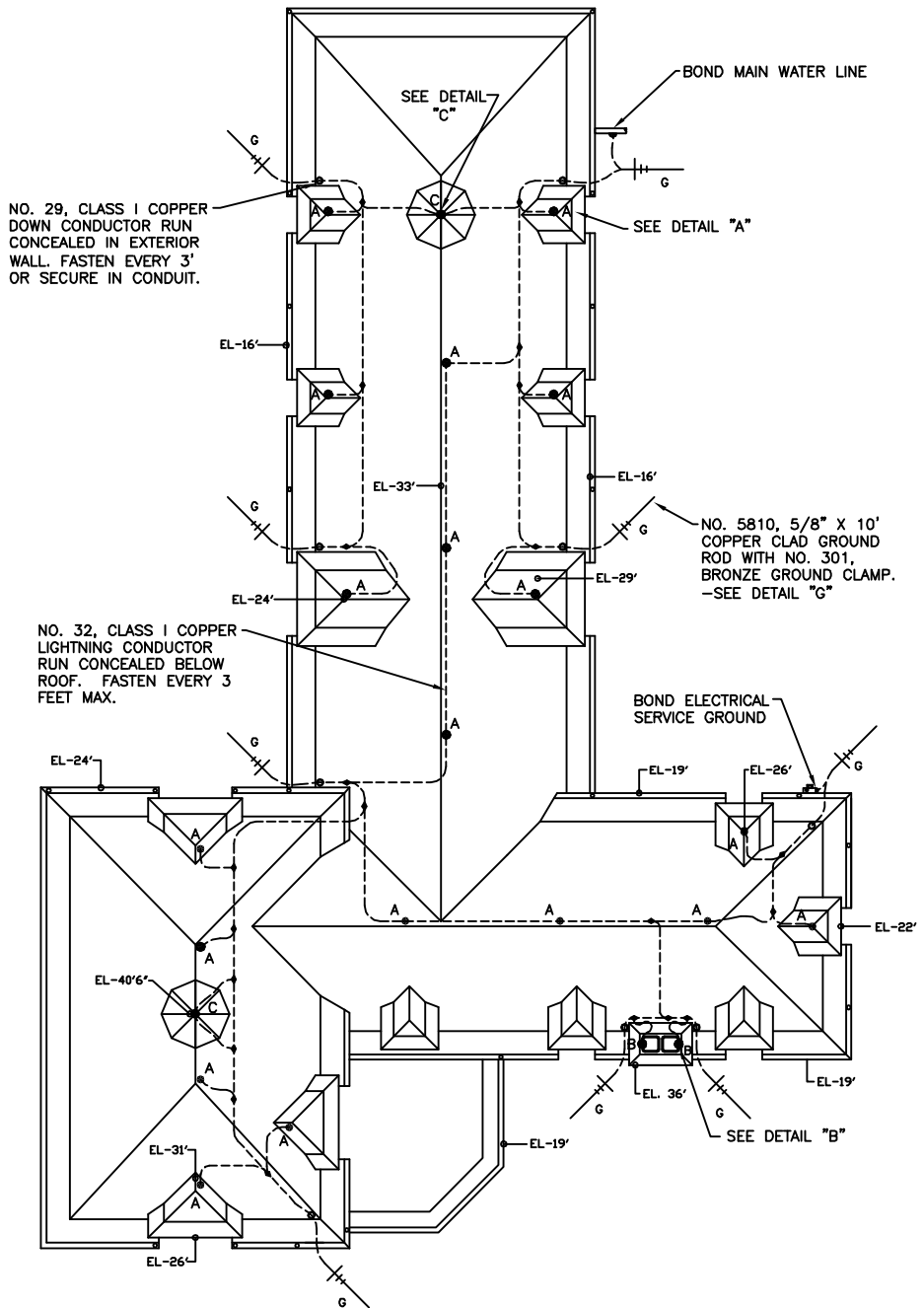


NOTES

1. THE COMPLETED INSTALLATION SHALL MEET THE REQUIREMENTS OF THE NATIONAL FIRE PROTECTION ASSOCIATION'S "STANDARD FOR THE INSTALLATION OF LIGHTNING PROTECTION SYSTEMS, 2004 EDITION" (NFPA 780) AND THE "INSTALLATION REQUIREMENTS FOR LIGHTNING PROTECTION SYSTEMS, UL 96A" OF UNDERWRITERS LABORATORIES INC.
2. COPPER LIGHTNING PROTECTION SYSTEM COMPONENTS SHALL NOT BE MOUNTED TO ALUMINUM SURFACES. ALUMINUM COMPONENTS SHALL BE USED TO AVOID ELECTROLYTIC CORROSION.
3. GROUNDED METAL BODIES WITHIN THE BONDING DISTANCE DETERMINED BY NFPA 780 - 2004 EDITION SHALL BE BONDED TO THE SYSTEM IN ACCORDANCE WITH THOSE REQUIREMENTS.
4. UNDERGROUND METALLIC PIPING ENTERING THE BUILDING SHALL BE BONDED TO THE NEAREST DOWN CONDUCTOR OR GROUND ELECTRODE.
5. ADHESIVE USED WITH ADHESIVE AIR TERMINAL BASES, CONDUCTOR FASTENERS AND ROOF PENETRATIONS SHALL BE COMPATIBLE WITH ROOFING MATERIAL - VERIFY WITH ROOFING CONTRACTOR.
6. ALL ELEVATIONS ARE APPROXIMATE AND ARE TAKEN FROM AVERAGE GRADE.
7. THE DESIGNS SHOWN FOR THESE SYSTEMS ARE SCHEMATIC AND ARE INTENDED TO SHOW BASIC SYSTEM DESIGN. CONTRACTOR SHALL VERIFY DIMENSIONS AND SITE CONDITIONS AND PROVIDE SYSTEMS THAT COMPLY WITH CODE REQUIREMENTS.
8. AIR TERMINALS ARE TO BE LOCATED AS SHOWN. THEY ARE TO BE A MAXIMUM OF 24" FROM THE ROOF EDGE AND PROJECT A MINIMUM OF 10" ABOVE THE PROTECTED EDGE. THE SPACING BETWEEN AIR TERMINALS ARE NOT TO EXCEED 20 FEET. AIR TERMINALS THAT EXTEND 24" ABOVE THE PROTECTED EDGE ARE NOT TO EXCEED A SPACING GREATER THAN 25', EXCEPT FOR MID-ROOF AIR TERMINALS (50' MAX SPACING).
9. ALL LIGHTNING CONDUCTORS ARE TO MAINTAIN A HORIZONTAL OR DOWNWARD PATH. ALL BENDS IN THE CONDUCTOR SHALL HAVE A RADIUS BEND OF 8 INCHES OR GREATER, AND SHALL HAVE AN ANGLE BEND OF 90 DEGREES OR GREATER.
10. EACH INDIVIDUAL ITEM OF THE LIGHTNING PROTECTION SYSTEM IS NOT LABELED FOR THE SAKE OF CLARITY. ITEMS ARE INDICATED AT RANDOM LOCATIONS ONLY, BUT A COMPLETE SYSTEM SHALL BE PROVIDED TO MEET MASTER LABEL REQUIREMENTS.

LEGEND

- A NO. 3812CUAT, 3/8" X 12" GENTLY TAPERED SOLID COPPER AIR TERMINAL WITH NO. 155-12, BRONZE CONCEALED BASE AND NO. 133, BRONZE AIR TERMINAL SWIVEL ADAPTER. -SEE DETAIL "A"
- B NO. 3818CUATT, 3/8" X 18" GENTLY TAPERED TINNED COPPER AIR TERMINAL WITH NO. CFB1.5, TINNED CHIMNEY FLUE BASE. -SEE DETAIL "B"
- C NO. 3812CUAT, 3/8" X 12" GENTLY TAPERED SOLID COPPER AIR TERMINAL WITH NO. 155-12, BRONZE CONCEALED BASE AND NO. 123, BRONZE AIR TERMINAL ADAPTER. -SEE DETAIL "C"
- NO. 29 CLASS I COPPER LIGHTNING CONDUCTOR (29 STRANDS OF 16 AWG WIRE - 215 LBS. PER 1000 FEET). SEE AIR TERMINAL DETAILS FOR METHOD OF FASTENING. SECURE TO BUILDING EVERY THREE FEET MAXIMUM.
- ⊥ G NO. 5810, 5/8" X 10'-0" COPPERCLAD GROUND ROD WITH NO. 301 GROUND CLAMP. -SEE DETAIL "G"



North

LIGHTNING PROTECTION SYSTEM PLAN

SCALE: NTS

SHEET NO. 1 OF 2	JOB NUMBER -	DRAWN BY: KHO
DWG NUMBER TYP-1	DATE 2006	CHECKED BY: -

TYPICAL RESIDENTIAL LIGHTNING PROTECTION DRAWING

MATERIALS MANUFACTURED BY

301 ZIEGLER DRIVE
GRAYSLAKE, IL 60030
(847) 548-8700

LIGHTNING PROTECTION • GROUNDING • EXOTHERMIC

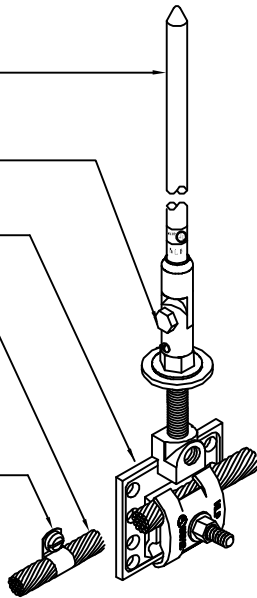
NO. 3812CUAT, 3/8" X 12"
GENTLY TAPERED SOLID
COPPER AIR TERMINAL

NO. 133, BRASS
SWIVEL ADAPTER

NO. 155-12, COPPER
CONCEALED BASE ASSEMBLY

NO. 29, CLASS I COPPER
LIGHTNING CONDUCTOR (29
STRANDS OF 16 AWG WIRES -
215 LBS. PER 1000')

NO. CCC2, COPPER CABLE
CLIP WITH STAINLESS STEEL
FASTENER - EVERY 3' MAX.



AIR TERMINAL DETAIL "A"

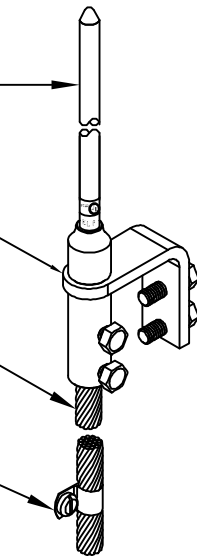
NTS

NO. 3818CUATT, 3/8" X 18"
GENTLY TAPERED TINNED
COPPER AIR TERMINAL

NO. CFB1.5, TINNED
CHIMNEY FLUE BASE

NO. 29T, CLASS I TINNED
COPPER LIGHTNING CONDUCTOR
(32 STRANDS OF 16 AWG WIRES
- 230 LBS. PER 1000')

NO. CCC2T, TINNED COPPER CABLE
CLIP WITH STAINLESS STEEL
FASTENER - EVERY 3' MAX.



AIR TERMINAL DETAIL "B"

NTS

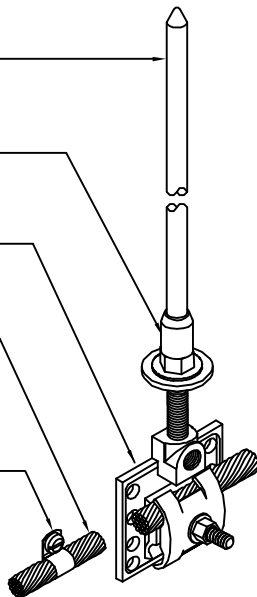
NO. 3812CUAT, 3/8" X 12"
GENTLY TAPERED SOLID
COPPER AIR TERMINAL

NO. 123, BRASS AIR
TERMINAL ADAPTER

NO. 155-12, COPPER
CONCEALED BASE ASSEMBLY

NO. 29, CLASS I COPPER
LIGHTNING CONDUCTOR (29
STRANDS OF 16 AWG WIRES -
215 LBS. PER 1000')

NO. CCC2, COPPER CABLE
CLIP WITH STAINLESS STEEL
FASTENER - EVERY 3' MAX.



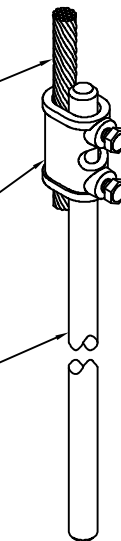
AIR TERMINAL DETAIL "C"

NTS

NO. 29, CLASS I COPPER
LIGHTNING CONDUCTOR (29
STRANDS OF 16 AWG WIRES -
215 LBS. PER 1000')

NO. 301, BRONZE
GROUND CLAMP

NO. 5810, 5/8" X 10'
COPPER CLAD GROUND ROD



GROUND ROD DETAIL "G"

NTS

SHEET NO.
2 OF 2

JOB NUMBER
-

DRAWN BY:
KHO

DWG NUMBER
TYP-1

DATE
2006

CHECKED BY:

**TYPICAL RESIDENTIAL
LIGHTNING PROTECTION DRAWING**

MATERIALS MANUFACTURED BY
HARGERTM
LIGHTNING PROTECTION • GROUNDING • EXOTHERMIC
301 ZIEGLER DRIVE
GRAYSLAKE, IL 60030
(847) 548-8700