

LIGHTNING PROTECTION SYSTEM PLAN

SCALE: NTS

NOTES:

1. THE COMPLETED INSTALLATION SHALL MEET THE "INSTALLATION REQUIREMENTS FOR LIGHTNING PROTECTION SYSTEMS, UL96A" OF UNDERWRITERS LABORATORIES - 2001 EDITION. THE UL MASTER LABEL SHALL BE FURNISHED TO THE OWNER UPON COMPLETION.
2. ALUMINUM LIGHTNING PROTECTION SYSTEM COMPONENTS SHALL NOT BE MOUNTED TO COPPER SURFACES. COPPER COMPONENTS SHALL BE USED TO AVOID ELECTROLYTIC CORROSION.
3. METAL BODIES WITHIN 6' - 0" OF THE LIGHTNING PROTECTION SYSTEM SHALL BE BONDED TO THE SYSTEM IN ACCORDANCE WITH UL96A - 1995 REQUIREMENTS.
4. UNDERGROUND METALLIC PIPING ENTERING THE BUILDING SHALL BE BONDED TO THE NEAREST DOWN CONDUCTOR OR GROUND ELECTRODE.
5. ADHESIVE USED WITH ADHESIVE AIR TERMINAL BASES AND CONDUCTOR FASTENERS SHALL BE COMPATIBLE WITH ROOFING MEMBRANE - VERIFY WITH ROOFING CONTRACTOR.
6. AIR TERMINALS HAVE BEEN LOCATED ON THE ROOF TOP EQUIPMENT AS REQUIRED. IF THE METAL THICKNESS OF AN OBJECT IS 3/16" OR GREATER, AIR TERMINALS MAY BE ELIMINATED IF THE OBJECT IS PROPERLY CONNECTED TO THE SYSTEM.
7. ROOF TOP EQUIPMENT NOT SHOWN ON THIS DRAWING SHALL BE PROTECTED AS REQUIRED TO MEET THE REQUIREMENTS LISTED ABOVE INCLUDING THE INSTALLATION OF AIR TERMINALS AND OR BONDING. IF THE METAL THICKNESS OF AN OBJECT IS 3/16" OR GREATER, AIR TERMINALS MAY BE ELIMINATED IF THE OBJECT IS PROPERLY CONNECTED TO THE SYSTEM.
8. AIR TERMINALS ARE TO BE LOCATED AS SHOWN. THEY ARE TO BE A MAXIMUM OF 24" FROM THE ROOF EDGE AND PROJECT A MINIMUM OF 10" ABOVE THE PROTECTED EDGE. THE SPACING BETWEEN AIR TERMINALS ARE NOT TO EXCEED 20 FEET. AIR TERMINALS THAT EXTEND 24" ABOVE THE PROTECTED EDGE ARE NOT TO EXCEED A SPACING GREATER THAN 25', EXCEPT FOR MID-ROOF AIR TERMINALS (50' MAX SPACING).
9. ALL LIGHTNING CONDUCTORS ARE TO MAINTAIN A HORIZONTAL OR DOWNWARD PATH. ALL BENDS IN THE CONDUCTOR SHALL HAVE A RADIUS BEND OF 8 INCHES OR GREATER, AND SHALL HAVE AN ANGLE BEND OF 90 DEGREES OR GREATER.
10. EACH INDIVIDUAL ITEM OF THE LIGHTNING PROTECTION SYSTEM IS NOT LABELED FOR THE SAKE OF CLARITY. ITEMS ARE INDICATED AT RANDOM LOCATIONS ONLY, BUT A COMPLETE SYSTEM SHALL BE PROVIDED TO MEET MASTER LABEL REQUIREMENTS.
11. ROOF PADS, PAVERS, FLASHINGS OR ANY OTHER SPECIAL ROOFING MATERIALS REQUIRED FOR THE INSTALLATION OF THE LIGHTNING PROTECTION SYSTEM SHALL BE FURNISHED AND INSTALLED BY THE ROOFING CONTRACTOR.

LEGEND

- A NO. 1218ALAT, 1/2" X 18" GENTLY TAPERED SOLID ALUMINUM AIR TERMINAL WITH NO. AUBU121, ALUMINUM UNIVERSAL BASE MOUNTED VERTICALLY. -SEE DETAIL "A"
- B NO. 1212ALAT, 1/2" X 12" GENTLY TAPERED SOLID ALUMINUM AIR TERMINAL WITH NO. AUBU121, ALUMINUM UNIVERSAL BASE MOUNTED HORIZONTALLY. -SEE DETAIL "B"
- C NO. 1224ALAT, 1/2" X 24" GENTLY TAPERED SOLID ALUMINUM AIR TERMINAL WITH NO. AUBU121, ALUMINUM UNIVERSAL BASE MOUNTED HORIZONTALLY. -SEE DETAIL "C"
- D NO. 1218ALAT, 1/2" X 18" GENTLY TAPERED SOLID ALUMINUM AIR TERMINAL WITH NO. AUBU121, ALUMINUM UNIVERSAL BASE MOUNTED VERTICALLY. -SEE DETAIL "D"
- NO. 29 CLASS I COPPER LIGHTNING CONDUCTOR (29 STRANDS OF 16 AWG WIRE - 215 LBS. PER 1000 FEET). SEE AIR TERMINAL DETAILS FOR METHOD OF FASTENING. SECURE TO BUILDING EVERY THREE FEET MAXIMUM.
- - - - NO. A24 CLASS I ALUMINUM LIGHTNING CONDUCTOR (24 STRANDS OF 14 AWG WIRE - 98 LBS. PER 1000 FEET). SEE AIR TERMINAL DETAILS FOR METHOD OF FASTENING. SECURE TO BUILDING EVERY THREE FEET MAXIMUM.
- ⊕ NO. BMTRC1, BIMETAL THRU ROOF CONNECTOR ASSEMBLY WITH NO. 29, DOWN CONDUCTOR BOND TO STRUCTURAL STEEL BELOW. -SEE DETAIL "T"
- ⊕ TWO NO. 5810, 5/8" X 10'-0" COPPERCLAD GROUND RODS WITH ULTRAWELDED CONNECTIONS. SPACE 10 FEET APART AT EACH DOWN CONDUCTOR LOCATION. -SEE DETAIL "G"

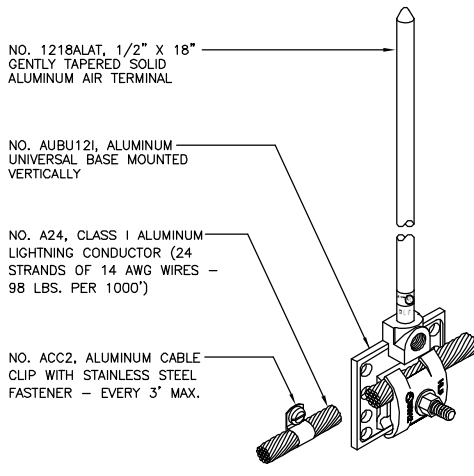
SHEET NO. 1 OF 2	JOB NUMBER -	DRAWN BY: KHO
DWG NUMBER TYP-2	DATE 2006	CHECKED BY: -

TYPICAL COMMERCIAL LIGHTNING PROTECTION DRAWING

MATERIALS MANUFACTURED BY

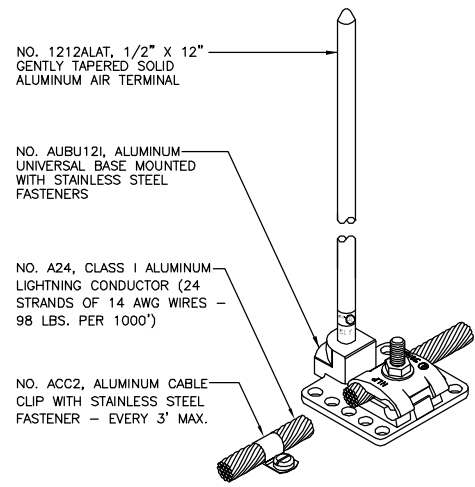
301 ZIEGLER DRIVE
GRAYSLAKE, IL 60030
(847) 548-8700

LIGHTNING PROTECTION • GROUNDING • EXOTHERMIC



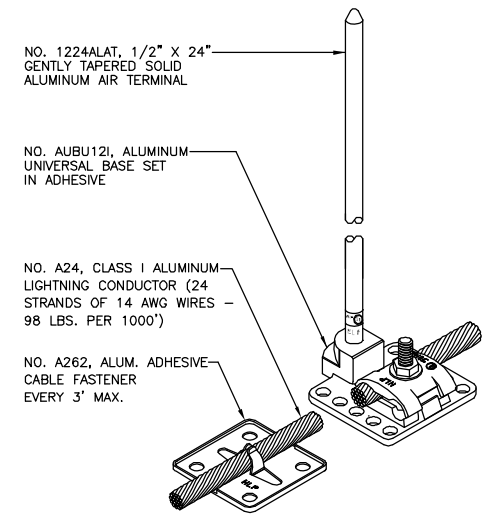
AIR TERMINAL DETAIL "A"

NTS



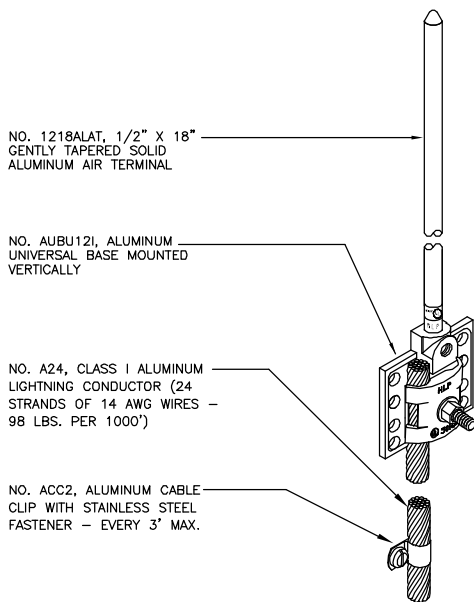
AIR TERMINAL DETAIL "B"

NTS



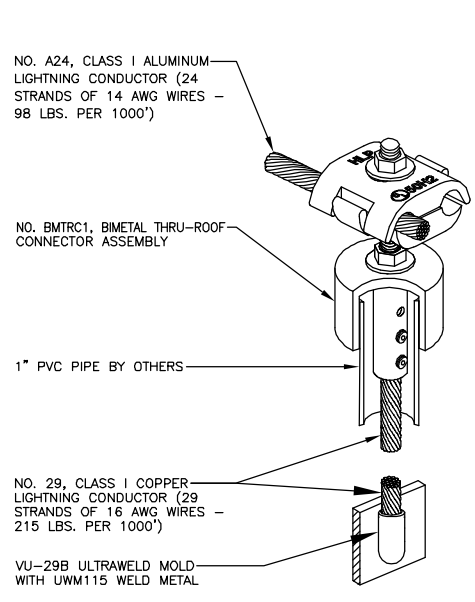
AIR TERMINAL DETAIL "C"

NTS



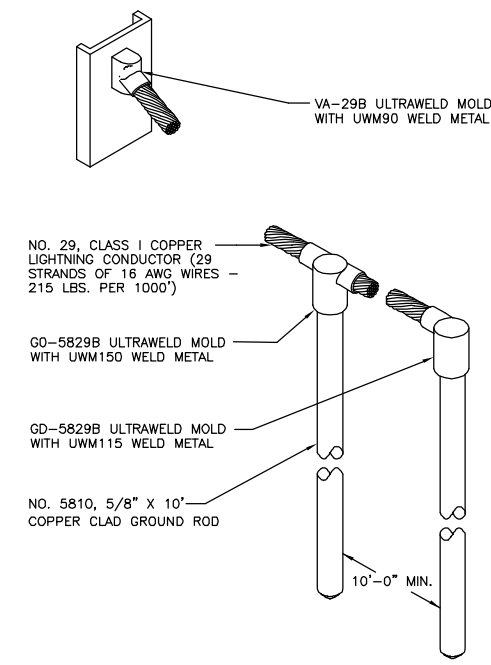
AIR TERMINAL DETAIL "D"

NTS



THRU ROOF DETAIL "T"

NTS



GROUND ROD DETAIL "G"

NTS

SHEET NO. 2 OF 2	JOB NUMBER -	DRAWN BY: KHO
DWG NUMBER TYP-2	DATE 2006	CHECKED BY: -

**TYPICAL COMMERCIAL
LIGHTNING PROTECTION DRAWING**

MATERIALS MANUFACTURED BY

HARGER™

301 ZIEGLER DRIVE
GRAYSLAKE, IL 60030
(847) 548-8700

LIGHTNING PROTECTION • GROUNDING • EXOTHERMIC