

Tamper Proof Products

LINE CARD

Tamper Proof Hardware



Tamper Proof Bolts

Part No.	Thread Size	Length	Torque Rating in/lbs
RHBOB45S-10	1/4-20	5/8"	96
RHBOB64S-10	3/8-16	1/2"	240
RHBOB65S-10	3/8-16	5/8"	240
RHBOB68S-10	3/8-16	1"	240

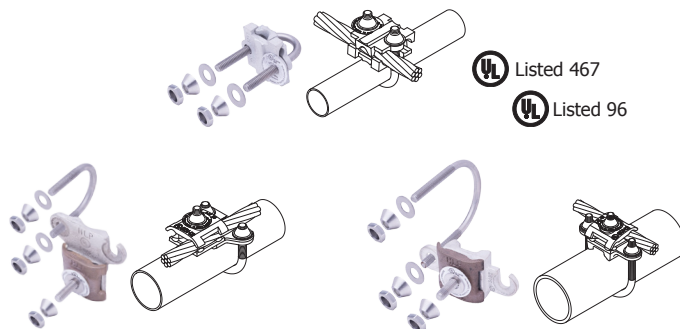
Tamper Proof Nut

Part No.	Thread Size	Torque Rating in/lbs
N420SBON-10	1/4-20	96
N518SBON-10	5/16-18	120
N616SBON-10	3/8-16	240

NOTES:

- Manufactured from 18-8 stainless steel.
- Other sizes available. Please contact factory for more information.

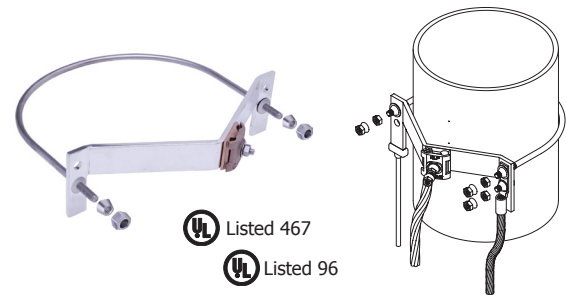
CPC Pipe Ground Clamps



CPC Pipe Clamps

Part No.	Material	Nominal Pipe Size Range	Pipe Outside Diameter	Torque Rating in/lbs
CPC.5/.75TP	ETPB*	.5" - .75"	.375" - 1"	240
CPC1/1.25TP	ETPB*	1" - 1.25"	.75" - 1.7"	240
CPC1.5/2TP	ETPB*	1.5" - 2"	1" - 2.4"	240
CPC2.5/3TP	ETPB*	2.5" - 3"	2.25" - 3.5"	240
CPC3.5/4TP	ETPB*	3.5" - 4"	3.2" - 4.5"	240
CPC5/6TP	ETPB*	5" - 6"	4.75" - 6.63"	240

- Dual UL Listing (UL96 and UL467).
- Acceptable for direct burial.
- Tamper Proof comes with break away nuts.
- Wide conductor range; #6 Solid through 250 MCM.
- Also used for pedestal grounding.
- Feature "quick connect", bi-directional design.
- Pressed stud design ensures a flush mounting surface.
- * Electro Tin Plated Bronze includes stainless steel hardware.

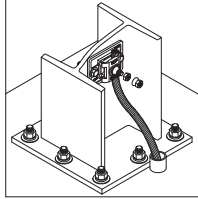
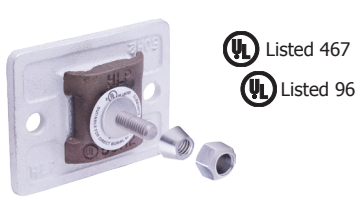


UPC Pipe Clamps

Part No.	Material	Nominal Pipe Size	Torque Rating in/lbs
UPC8CTP	Tinned Copper	8"	240
UPC10CTP	Tinned Copper	10"	240
UPC12CTP	Tinned Copper	12"	240

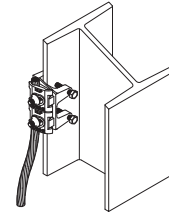
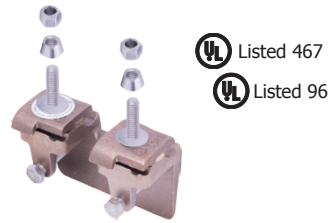
- Provides bi-directional grounding capabilities.
- Mechanical connector to connect ground conductors #6 thru 250 MCM.
- Rated for direct burial.
- Dual UL Listing (UL96 & UL467)

Cable to Flat Surface Connectors



Bonding Plate

Part No.	Material	Conductor Range	Torque Rating in/lbs
217TP	ETPB*	#6 AWG - 4/0	120

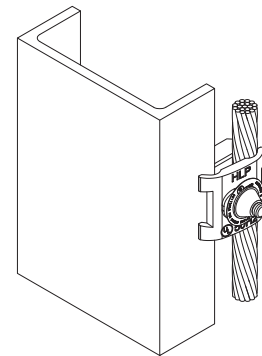


Flange Bonding Clamps

Part No.	Material	Conductor Range	Torque Rating in/lbs
223TP	Copper	#6 AWG - 4/0	120
223TTP	ETPB*	#6 AWG - 4/0	120

Cable to Flat Metal Connectors

Part No.	Material	Conductor Range	Torque Rating in/lbs
213TP	Copper	#6 AWG - 250 MCM	120
213TTP	ETPB*	#6 AWG - 250 MCM	120



NOTES:

- Manufactured from high conductivity copper alloy.
- Suitable for direct burial.
- *ETPB - Electro Tin Plated Bronze.

Fence Fabric Grounding Clamps

Fence Fabric Grounding Clamps

Part No.	Material	Conductor Size (AWG)	Torque Rating in/lbs
FGC8TP	ETPB*	#8	96
FGC6TP	ETPB*	#6	96
FGC4TP	ETPB*	#4	96
FGC2TP	ETPB*	#2	96
FGC26TP	ETPB*	#2 & #6	96
FGC2/0TP	ETPB*	2/0	96
FGC2-4/0TP**	ETPB*	#2 & 4/0	96

**Accepts a #2 AWG and/or 4/0 AWG conductor.

- Unique design allows clamp to form connections at most any angle.
- The conductor maintains a direct path to ground while connected to an object that is parallel, perpendicular or in any degree in between.
- Allows for use with most metallic surfaces including galvanized.

* Electro Tin Plated Brass

