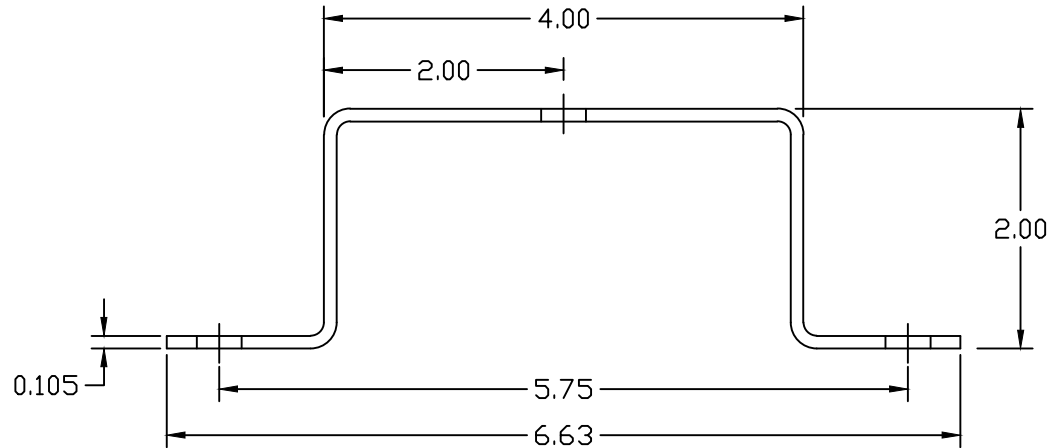


FLAT LAYOUT



S.S. WALL BRACKET

EST WT 0.312#

APPROVED

AS DRAWN: \_\_\_\_\_  
 AS NOTED: \_\_\_\_\_  
 DATE: \_\_\_\_\_

THIS DOCUMENT AND THE CONTENTS THEREOF IS THE PROPERTY OF HARGER INC., AND IS FURNISHED TO YOU FOR INFORMATION ONLY. THE INFORMATION CONTAINED HEREIN IS CONFIDENTIAL AND OF A PROPRIETARY NATURE AND MUST NOT BE DISCLOSED TO THIRD PARTIES WITHOUT THE EXPRESS WRITTEN APPROVAL OF HARGER INC.

| LET | REVISION | DATE | BY |
|-----|----------|------|----|
|     |          |      |    |
|     |          |      |    |
|     |          |      |    |
|     |          |      |    |
|     |          |      |    |
|     |          |      |    |
|     |          |      |    |
|     |          |      |    |
|     |          |      |    |

TOLERANCES UNLESS NOTED:  
 FRACTIONAL +/- 1/16  
 DECIMAL +/- .030  
 BREAK SHARP EDGES

3RD ANGLE PROJECTION

PART NO. WBKT2  
 WALL BRACKET

DRAWN BY:  
 KAB  
 CHECKED BY:  
 DATE:  
 050800

**HARGER™**  
 301 ZIEGLER DRIVE  
 GRAYSLAKE, IL 60030  
 (847) 548-8700

REVISION:  
 -  
 SCALE:  
 5/8  
 SHEET:  
 1 OF 1