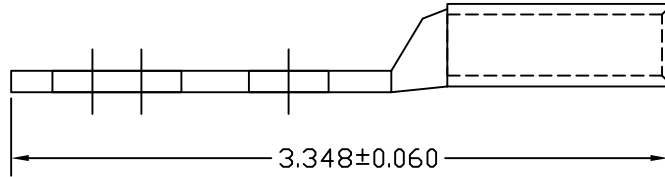
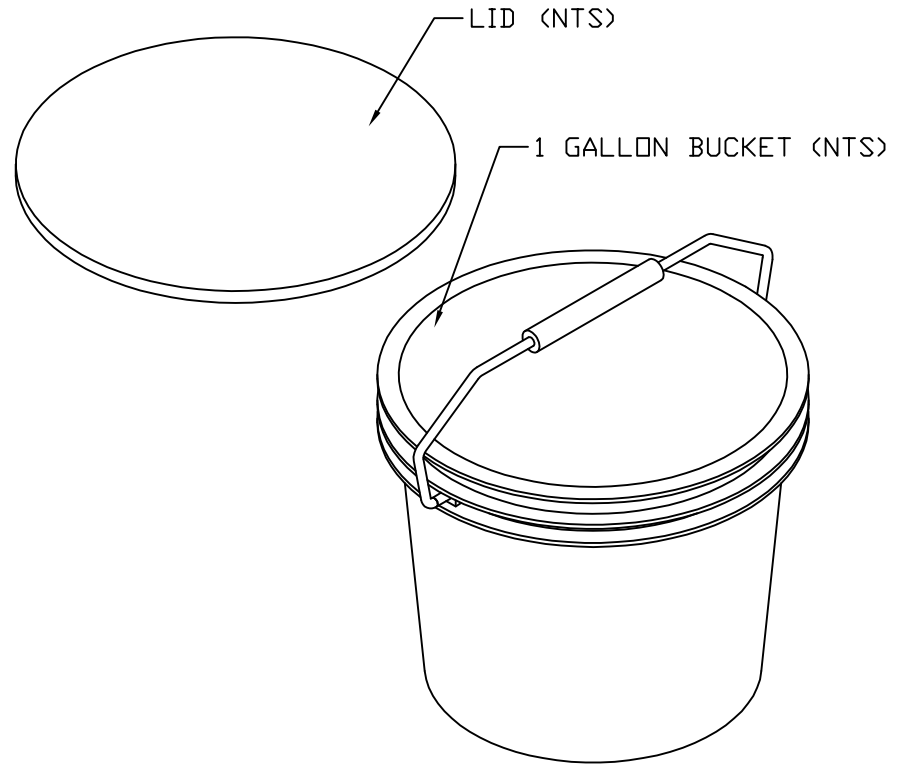


FOR 3/8 HARDWARE



GECLB22BC x 250 PCS



APPROVED

AS DRAWN: \_\_\_\_\_  
 AS NOTED: \_\_\_\_\_  
 DATE: \_\_\_\_\_

THIS DOCUMENT AND THE CONTENTS THEREOF IS THE PROPERTY OF HARGER INC., AND IS FURNISHED TO YOU FOR INFORMATION ONLY. THE INFORMATION CONTAINED HEREIN IS CONFIDENTIAL AND OF A PROPRIETARY NATURE AND MUST NOT BE DISCLOSED TO THIRD PARTIES WITHOUT THE EXPRESS WRITTEN APPROVAL OF HARGER INC.

| LET  | REVISION | DATE | BY |
|--|----------|------|----|
| -  | -        | -    | -  |
| -  | -        | -    | -  |
| -  | -        | -    | -  |
| TOLERANCES UNLESS NOTED:<br>FRACTIONAL +/- 1/16<br>DECIMAL +/- .030<br>- |          |      |    |

PART NO. GECLB22BC250BK  
 - - -  
 DRAWN BY: BK  
 CHECKED BY: \_\_\_\_\_

**HARGER™**  
 301 ZIEGLER DRIVE  
 GRAYSLAKE, IL 60030  
 (847) 548-8700

REVISION: -  
 SCALE: FULL  
 SHEET: 1 OF 1