
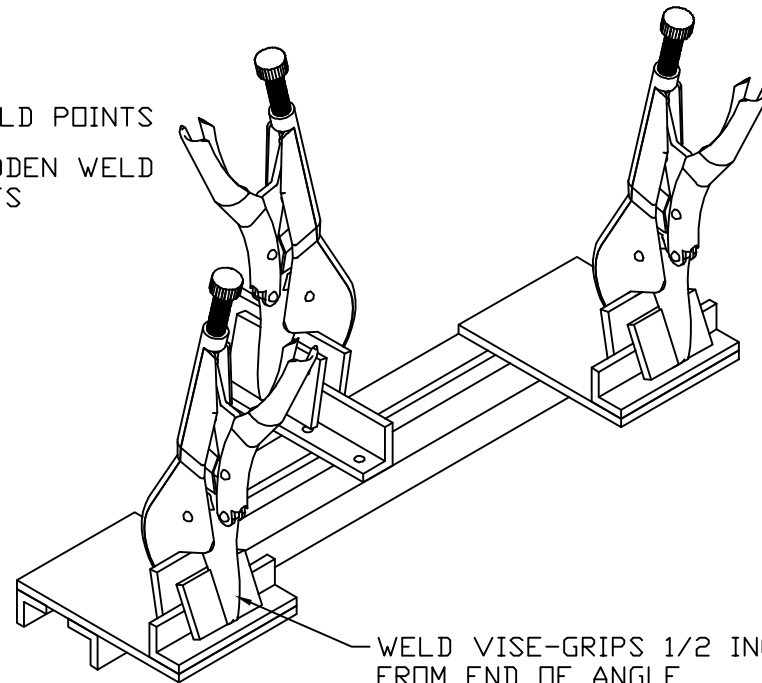
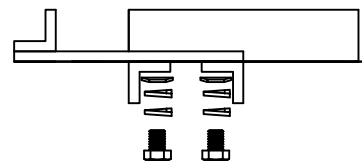
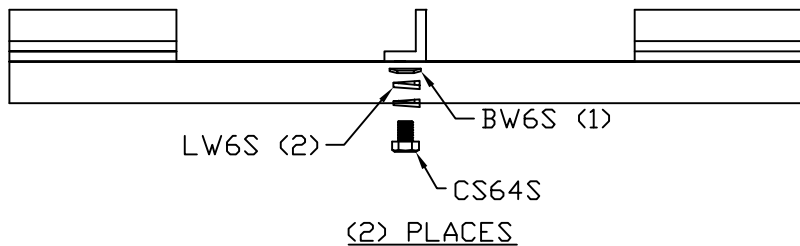
 = WELD POINTS
 = HIDDEN WELD POINTS



BEFORE WELDING, CLAMP A STRAIGHT ROD TO BOTH STEEL ANGLE ENDS TO ENSURE ANGLE-ENDS ARE IN-LINE.

RAISE VISE-GRIPS 1/16 MIN. TO 1/8 MAX. INCH WITH SPACER TO ENSURE VISE CLOSES COMPLETELY



- NOTES:
1. ALLIGN PIECES TOGETHER WITH FIXTURE.
 2. WELD
 3. SANDBLAST
 4. BLOW UNIT OFF WITH COMPRESSED AIR.
 5. MASK VISE GRIP HANDLES AND SS POSITIONER WITH PLASTIC WRAP
 6. PAINT WITH BLUE ENAMEL PAINT.
 7. PACK ONE ASSEMBLY PER ZBOX19X13X9 CARTON.

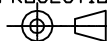
GROUND ROD AND CABLE CLAMP

EST WT 10#

APPROVED

AS DRAWN: _____
 AS NOTED: _____
 DATE: _____

THIS DOCUMENT AND THE CONTENTS THEREOF IS THE PROPERTY OF HARGER INC., AND IS FURNISHED TO YOU FOR INFORMATION ONLY. THE INFORMATION CONTAINED HEREIN IS CONFIDENTIAL AND OF A PROPRIETARY NATURE AND MUST NOT BE DISCLOSED TO THIRD PARTIES WITHOUT THE EXPRESS WRITTEN APPROVAL OF HARGER INC.

B	REMOVE GRCCSP ECO0225	072720	WBD	
A	ADDED BW6S	052620	LAL	
LET	REVISION	DATE	BY	
TOLERANCES UNLESS NOTED:		3RD ANGLE PROJECTION		
FRACTIONAL +/- 1/16				
DECIMAL +/- .030				
BREAK SHARP EDGES				

PART NO. GRCC
WELDING FIXTURE

DRAWN BY: WSM
 CHECKED BY: _____
 DATE: 081202



301 ZIEGLER DRIVE
 GRAYSLAKE, IL 60030
 (847) 548-8700

REVISION: B
 SCALE: 7/32
 SHEET: 1 OF 1